



23 Fourdrinier Way, Hemel Hempstead
£1,450 pcm

squire | estates

23 Fourdrinier Way

Hemel Hempstead, Hemel Hempstead

Modern 2-bed first-floor apartment in Apsley Village, near station. Open-plan lounge/kitchen, fitted wardrobes, luxury bathroom, covered parking. Available from 4th April.

Council Tax band: C

EPC Energy Efficiency Rating: B

EPC Environmental Impact Rating: C

- Two double bedrooms



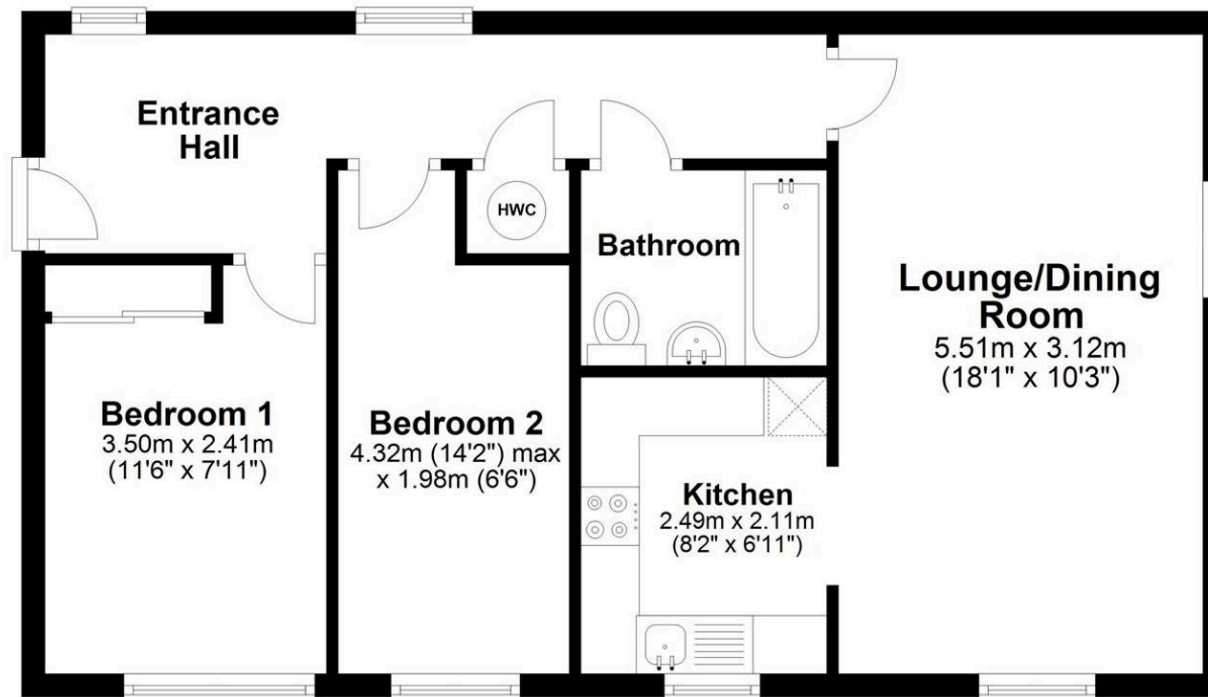
squire | estates

67 Marlowes, Hemel Hempstead
Hertfordshire HP1 1LE
t. 01442 233533

www.squireestates.co.uk

Floor Plan

Approx. 54.4 sq. metres (585.6 sq. feet)



Total area: approx. 54.4 sq. metres (585.6 sq. feet)

Disclaimer - Floor plan is for marketing purposes only and is to be used as a guide.
Plan produced using PlanUp.