



Yeomans Ride
Hemel Hempstead, HP2 6LG

squire | estates

Yeomans Ride, Hemel Hempstead

Squire Estates are pleased to present this very spacious TWO DOUBLE bedroom flat within walking distance to Hemel Hempstead INDUSTRIAL ESTATE & Astley cooper school. The property comprises of TWO DOUBLE bedrooms, a spacious lounge / dining room, a good size fully fitted modern kitchen with appliances and a family bathroom. No white goods included.

The flat further benefits from external storage & Gas central heating with plenty of parking. Available from 18/11/24

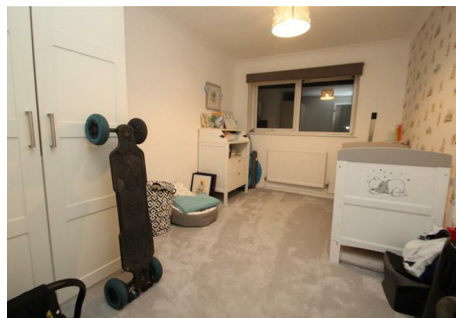
Features

- TWO DOUBLE Bedrooms
- walking distance to Industrial estate
- Walking distance to Astley cooper school
- Gas central heating
- Very spacious flat
- Available from 18/11/24
- No white goods included
- External storage cupboard
- EPC - C
- Council Tax - B

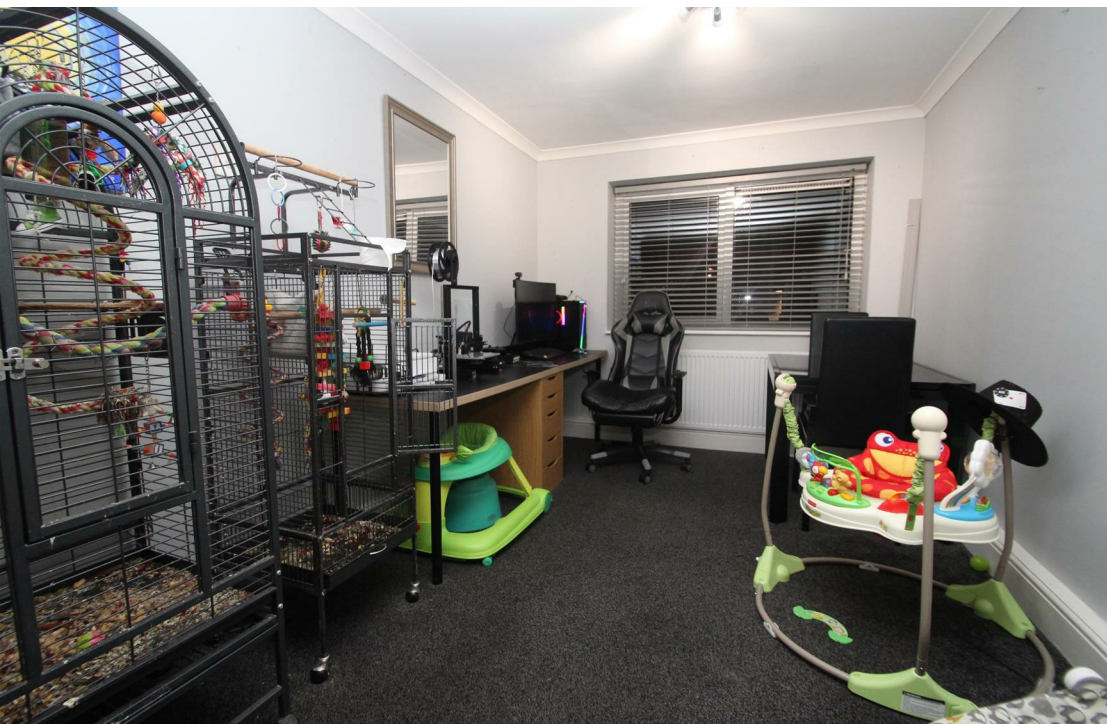
To Book a Viewing

Please contact Squire Estates on 01442 233533.

Please note we have not tested any apparatus, fixtures, fittings, or services. Interested parties must undertake their own investigation into the working order of these items. All measurements are approximate and photographs provided for guidance only.



Energy Efficiency Rating		
	Current	Potential
Very energy efficient - lower running costs		
(92 plus) A		
(81-91) B		
(69-80) C	70	71
(55-68) D		
(39-54) E		
(21-38) F		
(1-20) G		
Not energy efficient - higher running costs		
England & Wales	EU Directive 2002/91/EC	



67 Marlowes, Hemel Hempstead, Hertfordshire, HP1 1LE
01442 233533 | www.squirestates.co.uk