

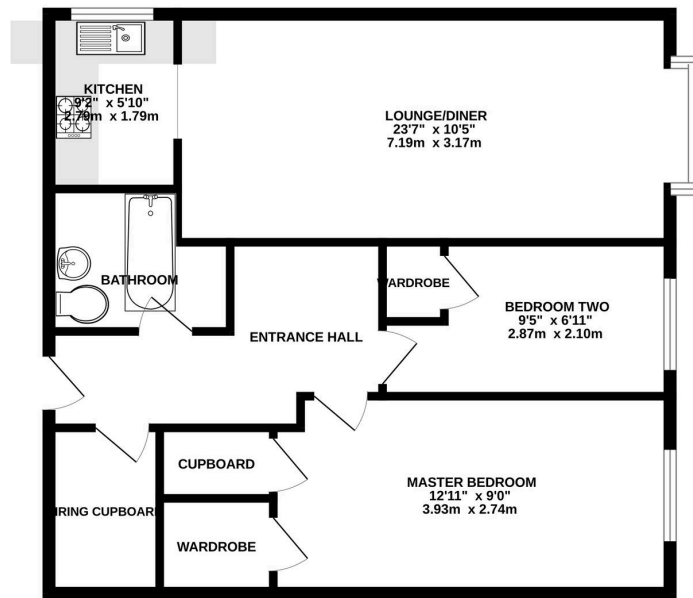


**TO
LET**

Cavendish Court London Road, Hemel Hempstead
£1,400 pcm

squire | estates

GROUND FLOOR
755 sq.ft. (70.2 sq.m.) approx.



TOTAL FLOOR AREA: 755 sq.ft. (70.2 sq.m.) approx.
Whilst every attempt has been made to ensure the accuracy of the floorplan contained herein, measurements of doors, windows, rooms and any other items are approximate and no responsibility is taken for any error, omission or mis-statement. This plan is for illustrative purposes only and should be used as such by any prospective purchaser. The services, systems and appliances shown have not been tested and no guarantee as to their operability or efficiency can be given.
Made with Metaviz ©2020

7 Cavendish Court London Road Hemel Hempstead, Hemel Hempstead

Well-presented two-bed first-floor flat near Apsley station. Spacious living area, modern kitchen, built-in wardrobes, allocated parking, double glazing, and secure entry.

Hemel Hempstead offers excellent transport links to London, a wide range of shops and leisure facilities, good schools, and easy access to green spaces and countryside.

Council Tax band: C

EPC Energy Efficiency Rating: B

EPC Environmental Impact Rating: C



squire | estates

67 Marlowes, Hemel Hempstead
Hertfordshire HP1 1LE
t. 01442 233533

www.squireestates.co.uk

