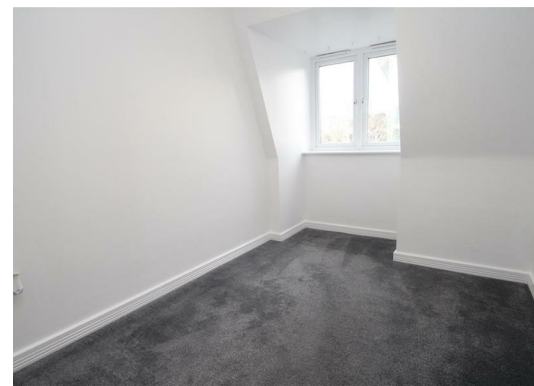


**Selden Hill  
Hemel Hempstead HP2 4FA  
£1,350 PCM**

- Two bedrooms
- Walking distance to Town Centre
- Gated secure parking
- Walk in wardrobe
- Built in appliances
- Brand new fridge freezer
- Available NOW
- EPC - C
- Council Tax - D
- Holding Deposit - £311



67 Marlowes  
Hemel Hempstead  
Hertfordshire  
HP1 1LE

01442 233533

homes@squireestates.co.uk

squireestates.co.uk

## Floor Plan

Approx. 58.0 sq. metres (623.8 sq. feet)



Total area: approx. 58.0 sq. metres (623.8 sq. feet)

The Floor Plan is not to Scale and measurements and areas shown are approximate and therefore should be used for illustrative purposes only. The plan has been prepared with due diligence and whilst we have confidence in the information produced it should not be relied upon. Maximum lengths and widths are represented on the plan. If there are any aspects of particular importance, you should carry out or commission your own inspection of the property. Copyright © SKMSTUDIO

Plan produced using PlanUp.