

**FOR  
SALE**



Drew Court, 70 Ebberns Road

squire | estates



*NO UPPER CHAIN* With a beautiful high specification, this ONE BEDROOM, GROUND FLOOR APARTMENT in APSLEY offered in excellent decorative order throughout.

The hallway leads to a spacious sitting/dining room open plan to a contemporary style kitchen with ample wall and base units and integrated appliances including an electric oven, and induction hob, fridge/freezer, washing machine/ dryer, and dishwasher.

The principal bedroom is a large double. The modern fully tiled shower room features a shower, a modern wall hung sink, WC and heated towel rail.

The apartment is fitted with laminate flooring and carpets throughout.

Outside there is one ALLOCATED PARKING space and a communal garden.

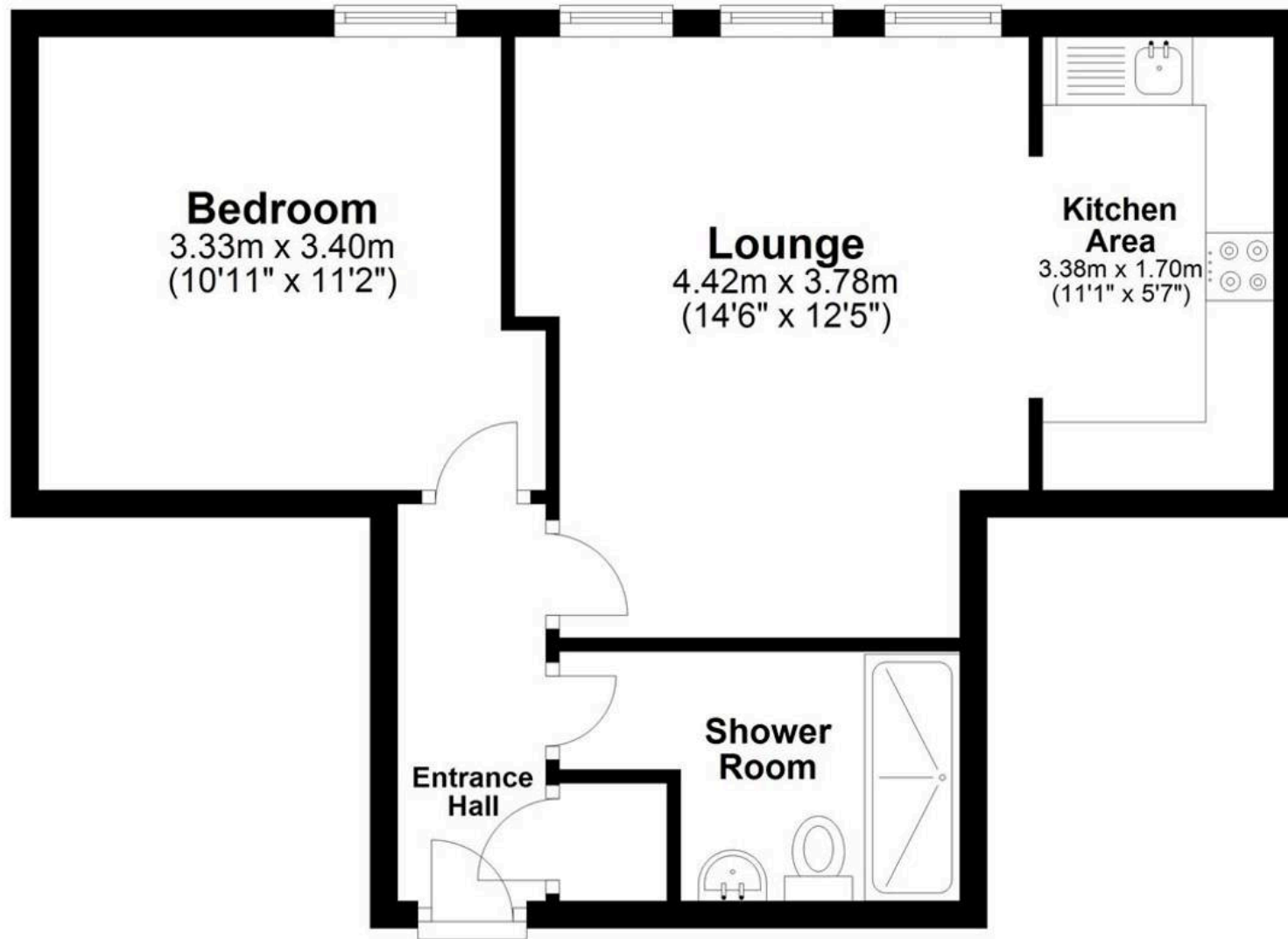
The apartment forms part of an established development of luxury apartments. close to Apsley Main Line station and Apsley Village as well as Hemel Hempstead Town Centre.

- One bedroom apartment
- One allocated parking space
- CHAIN FREE
- Walking distance to Apsley Train Station
- Communal gardens



# Floor Plan

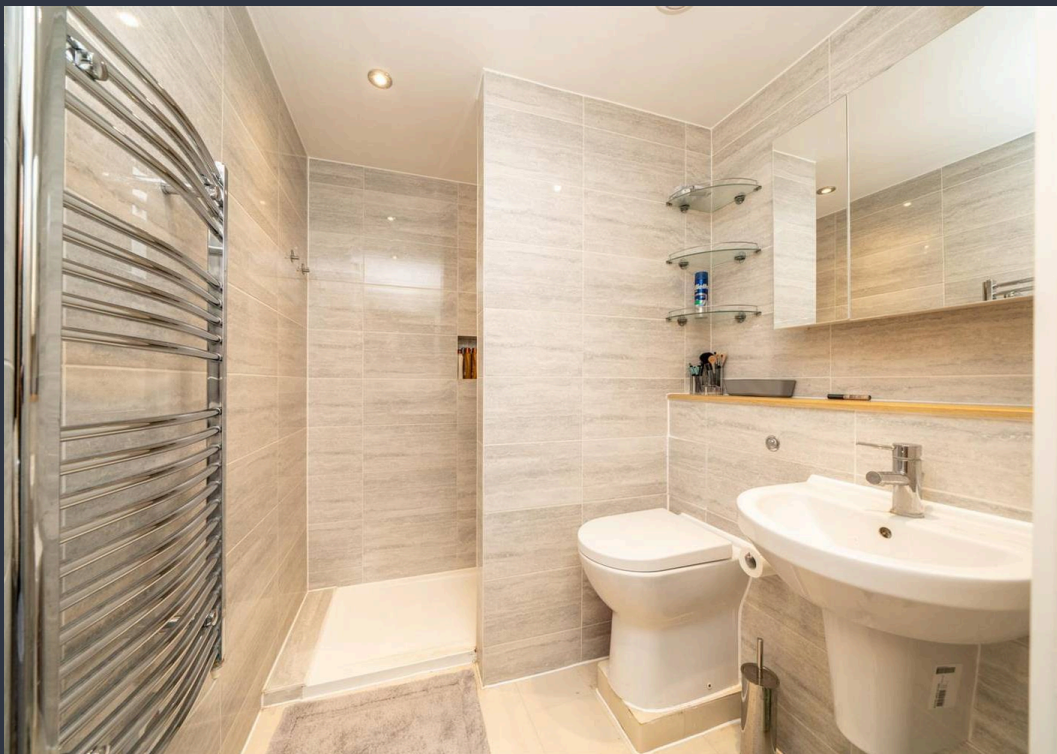
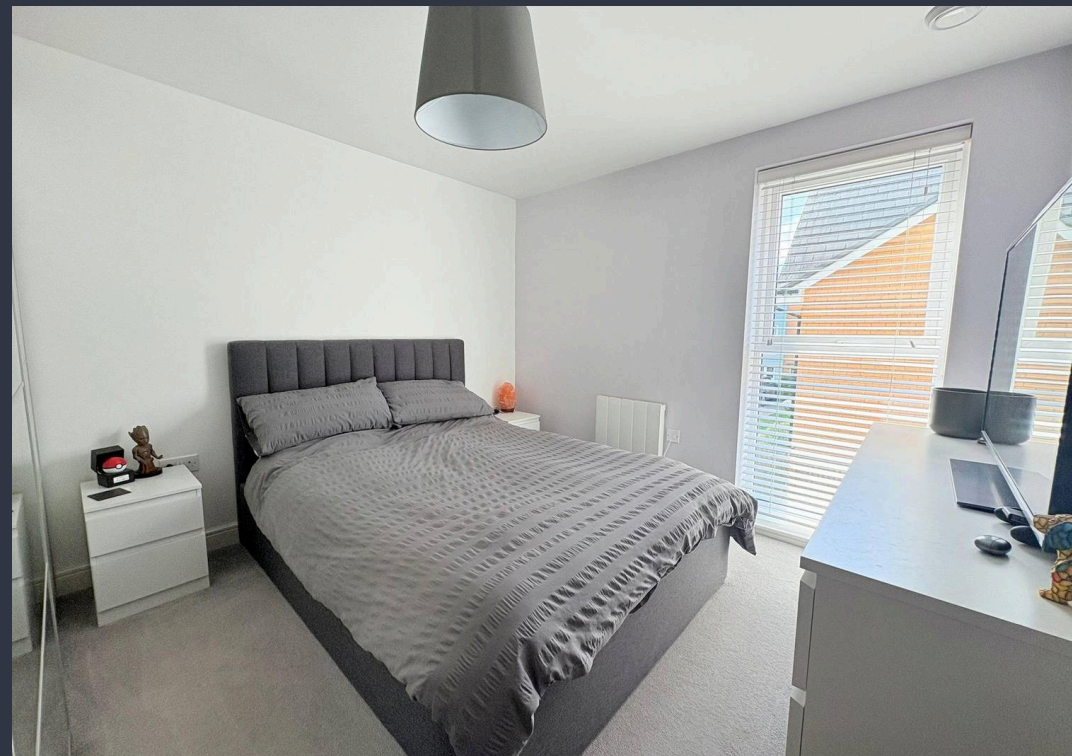
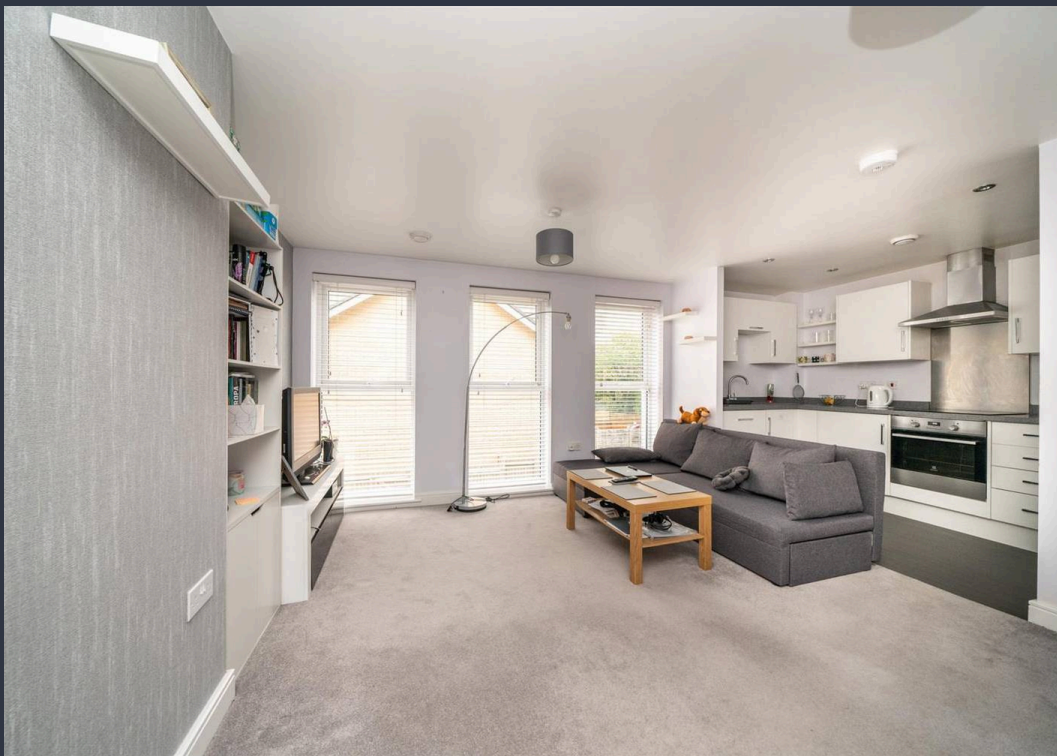
Approx. 41.7 sq. metres (448.8 sq. feet)



Total area: approx. 41.7 sq. metres (448.8 sq. feet)

Disclaimer - Floor plan is for marketing purposes only and is to be used as a guide - SKM Studio  
Plan produced using PlanUp.





squire | estates

67 Marlowes, Hemel Hempstead  
Hertfordshire HP1 1LE  
t. 01442 233533

[www.squireestates.co.uk](http://www.squireestates.co.uk)