



Somerles Road
Hemel Hempstead, HP1 3PH

squire | estates

Somerles Road, Hemel Hempstead

Squire Estates would like to present to the market this ONE bedroom First Floor Maisonette with ALLOCATED PARKING.

Located in Gadebridge the Maisonette has a front door that opens onto a stairway that leads up to the hallway which has an open-plan kitchen providing ample floor and wall units, coordinating work surfaces, space for appliances and open brickwork walls.

Leading off the hallway is the lounge, a bright room with a large window overlooking the front of the property, a good size double bedroom overlooking the rear of the property and a family bathroom which is part tiled with a white suite.

To the rear of the property accessed via the shared side passage is a small fenced off private garden area..

To the front of the Maisonette there is an allocated parking space.

Available from 30/11/24

Features


- ONE bedroom Maisonette
- recently new CARPETS/FLOORING THROUGHOUT
- First Floor
- Off road parking
- Bright lounge
- Available from 30/11/24
- Located in a quiet road
- Small garden area
- EPC - C
- Council tax - B

To Book a Viewing

Please contact Squire Estates on 01442 233533.

Please note we have not tested any apparatus, fixtures, fittings, or services. Interested parties must undertake their own investigation into the working order of these items. All measurements are approximate and photographs provided for guidance only.

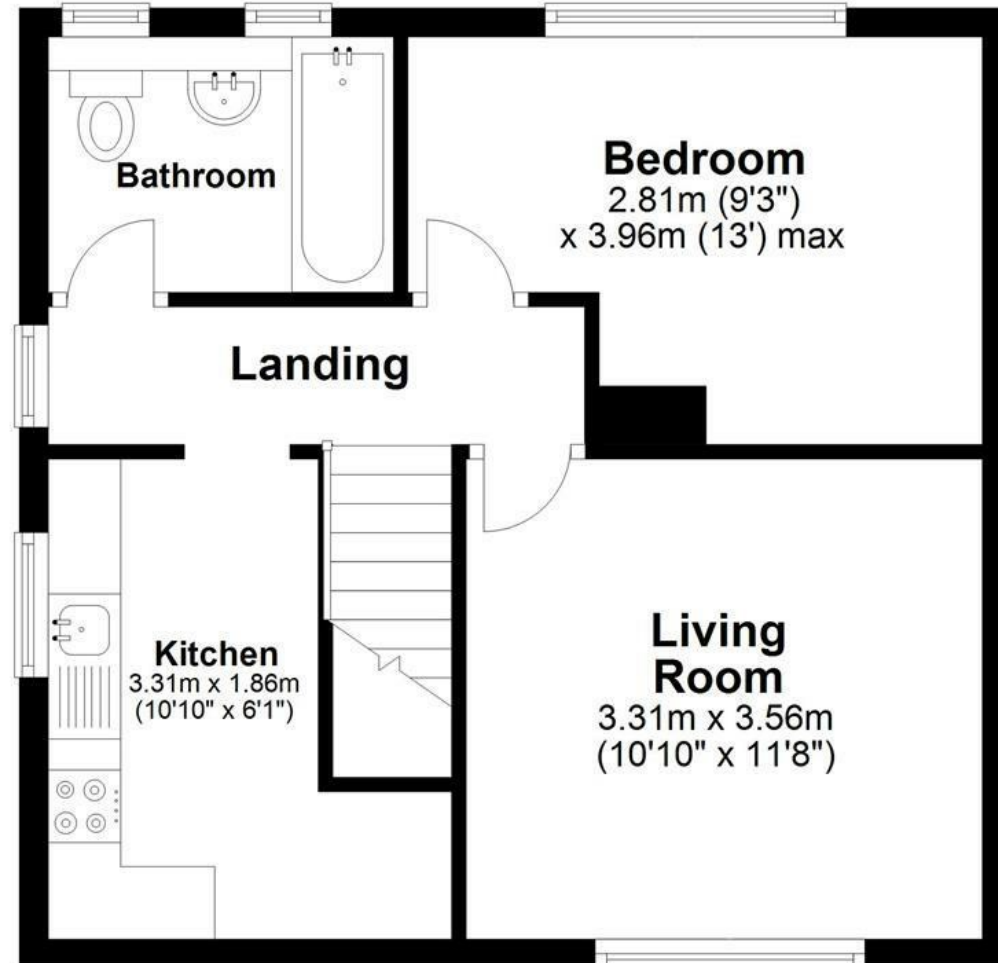
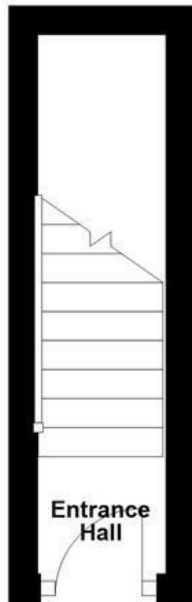


Energy Efficiency Rating		
	Current	Potential
<i>Very energy efficient - lower running costs</i>		
(92 plus) A		
(81-91) B		
(69-80) C	70	75
(55-68) D		
(39-54) E		
(21-38) F		
(1-20) G		
<i>Not energy efficient - higher running costs</i>		
England & Wales	EU Directive 2002/91/EC	

Floor Plan

Approx. 40.1 sq. metres (431.3 sq. feet)

Entrance
Approx. 3.3 sq. metres (35.4 sq. feet)



Total area: approx. 43.4 sq. metres (466.7 sq. feet)

Disclaimer - Floor plan is for marketing purposes only and is to be used as a guide - SKM Studio
Plan produced using PlanUp.

