

**Lower Barn
Hemel Hempstead HP3 9QL
£2,300 PCM**

- Three Bedroom semi-detached
- Alarm/camera system
- Fans/Lights remote controlled via WIFI
- Fully boarded Loft storage with ladder
- Utility room/ W/C in garden
- Available from 12/04/25
- Must be seen!
- Council tax - C
- EPC - C
- Holding Deposit - £530



67 Marlowes
Hemel Hempstead
Hertfordshire
HP1 1LE

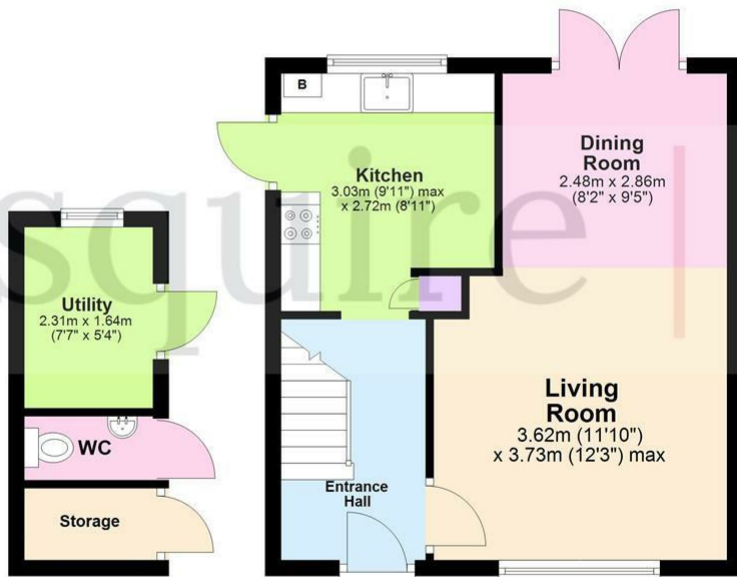
01442 233533

homes@squireestates.co.uk

squireestates.co.uk

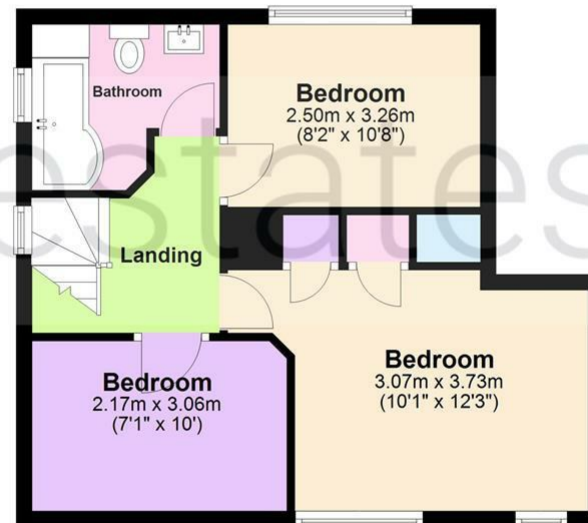
Ground Floor

Approx. 35.2 sq. metres (378.4 sq. feet)



First Floor

Approx. 39.9 sq. metres (429.1 sq. feet)



Total area: approx. 75.0 sq. metres (807.5 sq. feet)

The Floor Plan is not to Scale and measurements and areas shown are approximate and therefore should be used for illustrative purposes only. The plan has been prepared with due diligence and whilst we have confidence in the information produced it should not be relied upon. Maximum lengths and widths are represented on the plan. If there are any aspects of particular importance, you should carry out or commission your own inspection of the property. Copyright © SKMSTUDIO
Plan produced using PlanUp.