



Christchurch Road
Hemel Hempstead, HP2 5BX

squire | estates

Christchurch Road, Hemel Hempstead

Exclusive to Squire Estates a beautifully presented property which has been REDECORATED throughout on the first floor that boasts a modern and contemporary style of living accommodation comprising of spacious lounge with brand new fully fitted and applianced kitchen, two bedrooms and family bathroom with shower. Available 6th Jan 2025

Features

- Close To The Town Centre
- REDECORATED THROUGHOUT
- Two Bedrooms
- First Floor
- Gas Central Heating
- Available 6th January 2025
- Top Specification
- EPC Rating C
- Council tax Band B

To Book a Viewing

Please contact Squire Estates on 01442 233533.

Please note we have not tested any apparatus, fixtures, fittings, or services. Interested parties must undertake their own investigation into the working order of these items. All measurements are approximate and photographs provided for guidance only.



Energy Efficiency Rating		
	Current	Potential
<i>Very energy efficient - lower running costs</i>		
(92 plus) A		
(81-91) B	80	80
(69-80) C		
(55-68) D		
(39-54) E		
(21-38) F		
(1-20) G		
<i>Not energy efficient - higher running costs</i>		
England & Wales	EU Directive 2002/91/EC	

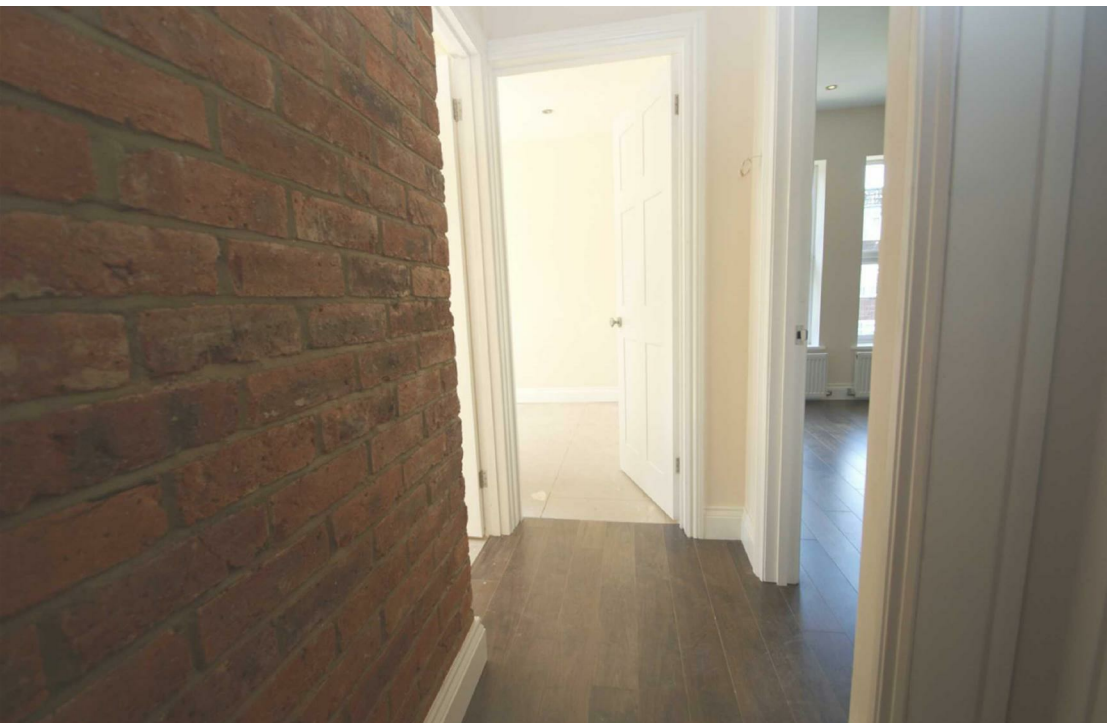
Floor Plan

Approx. 42.9 sq. metres (461.4 sq. feet)



Total area: approx. 42.9 sq. metres (461.4 sq. feet)

The Floor Plan is not to Scale and measurements and areas shown are approximate and therefore should be used for illustrative purposes only. The plan has been prepared with due diligence and whilst we have confidence in the information produced it should not be relied upon. Maximum lengths and widths are represented on the plan. If there are any aspects of particular importance, you should carry out or commission your own inspection of the property. Copyright © SKMSTUDIO
Plan produced using PlanUp.



67 Marlowes, Hemel Hempstead, Hertfordshire, HP1 1LE
01442 233533 | www.squirestates.co.uk