



Toms Croft
Hemel Hempstead, HP2 4LL

squire | estates

Toms Croft, Hemel Hempstead

Nestled in the heart of Adeyfield, is this delightful TWO BEDROOM FREEHOLD top floor maisonette with a PRIVATE GARDEN, offering the perfect blend of comfort and convenience.

The property features a bright and spacious open-plan kitchen, with ample wall and base units, and space for a fridge/freezer and slimline dishwasher, complete with a good sized living and dining space.

The two generous sized bedrooms provide ample space for rest and with storage. Bedroom two consists of French doors opening onto a Juliet balcony. The contemporary bathroom is complete with bath together with shower, and a pedestal sink and WC which is fully tiled.

The property has ample storage in the property which includes a deep storage cupboard with plumbing for the washing machine. The large loft is fully boarded offering additional storage space.

This maisonette also boasts its own private garden, perfect for outdoor entertaining. Additionally, an allocated parking space ensures easy and secure parking.

Situated in a desirable location, this property is a fantastic opportunity for anyone seeking a stylish and low-maintenance home, close to local shops.

Please note we have not tested any apparatus, fixtures, fittings, or services. Interested parties must undertake their own investigation into the working order of these items. All measurements are approximate and photographs provided for guidance only.



Features

- Two bedroom maisonette
- Private garden
- One parking space
- SHARE OF FREEHOLD
- Close to local shops
- Close to schools

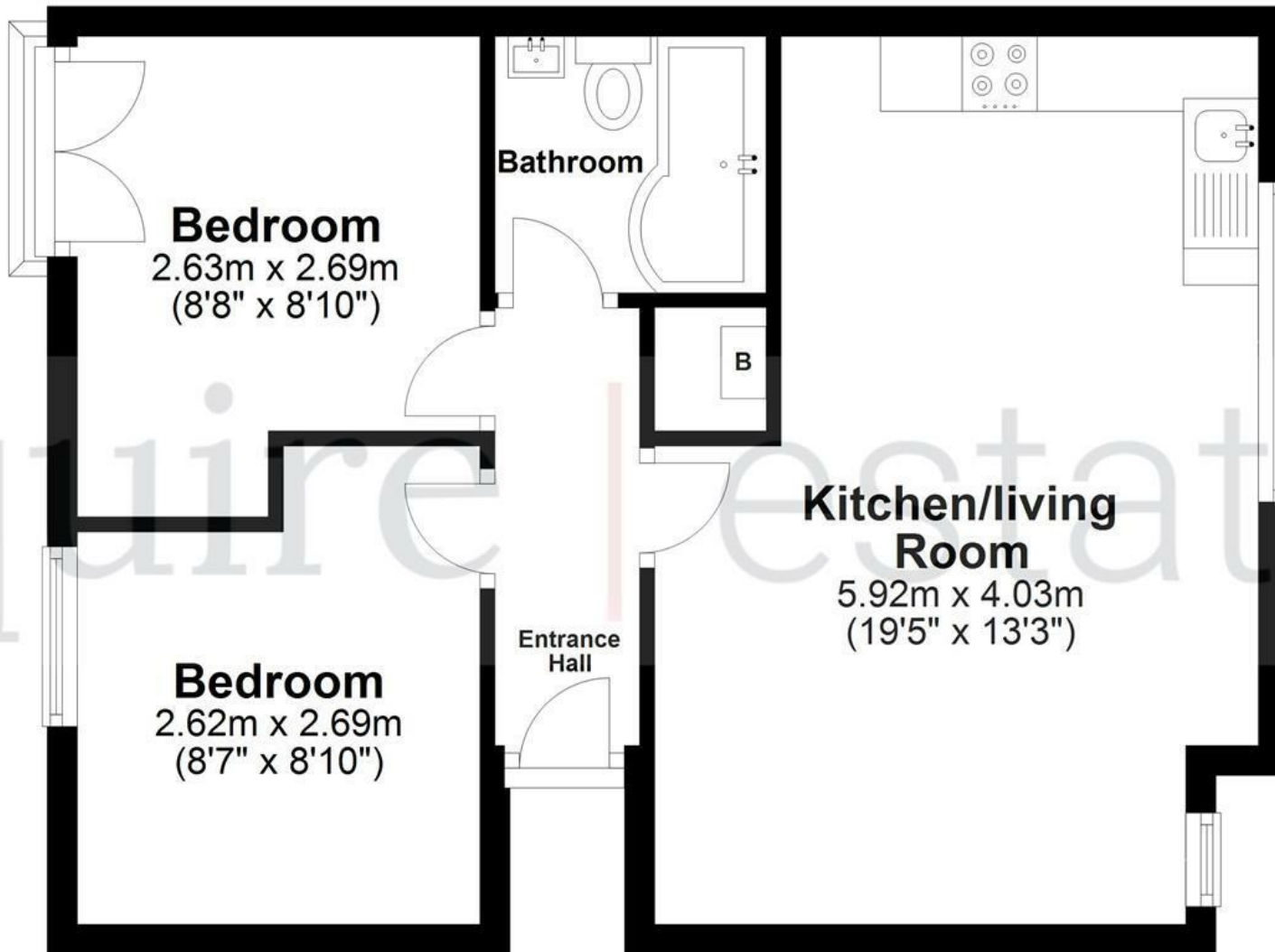
To Book a Viewing

Please contact Squire Estates on 01442 233533.

Energy Efficiency Rating		
	Current	Potential
<i>Very energy efficient - lower running costs</i>		
(92 plus) A		
(81-91) B		
(69-80) C	78	78
(55-68) D		
(39-54) E		
(21-38) F		
(1-20) G		
<i>Not energy efficient - higher running costs</i>		
England & Wales	EU Directive 2002/91/EC	

Floor Plan

Approx. 44.7 sq. metres (481.1 sq. feet)



Total area: approx. 44.7 sq. metres (481.1 sq. feet)

Disclaimer - Floor plan is for marketing purposes only and is to be used as a guide - SKM Studio

Plan produced using PlanUp.

