



The Waveney
Hemel Hempstead, HP2 6DQ

squire | estates

The Waveney, Hemel Hempstead

A one bedroom ground floor flat situated within easy access to the local shops. The property benefits from double glazing, central heating, appliances and fitted kitchen, lounge, double bedroom, large cupboard / study area and bathroom. Available from 14/09/24

Features


- One bedroom flat
- Ground floor
- Close to local shops & amenities
- Lots of parking available
- communal gardens
- Available from 14/09/24
- EPC - C
- Council tax - B

To Book a Viewing

Please contact Squire Estates on 01442 233533.

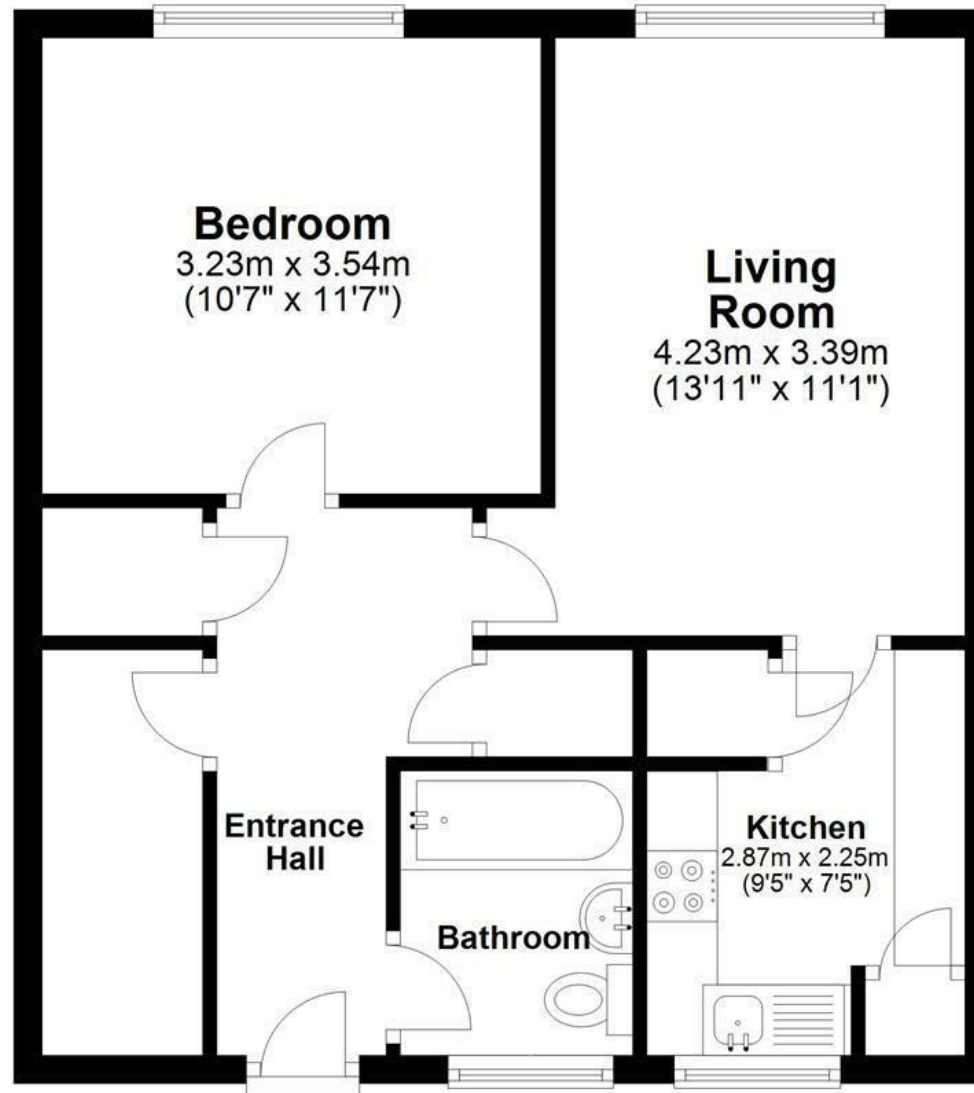
Please note we have not tested any apparatus, fixtures, fittings, or services. Interested parties must undertake their own investigation into the working order of these items. All measurements are approximate and photographs provided for guidance only.



Energy Efficiency Rating		
	Current	Potential
<i>Very energy efficient - lower running costs</i>		
(92 plus) A		
(81-91) B		
(69-80) C	72	76
(55-68) D		
(39-54) E		
(21-38) F		
(1-20) G		
<i>Not energy efficient - higher running costs</i>		
England & Wales	EU Directive 2002/91/EC 	

Ground Floor

Approx. 47.0 sq. metres (505.6 sq. feet)



Total area: approx. 47.0 sq. metres (505.6 sq. feet)

Disclaimer - Floor plan is for marketing purposes only and is to be used as a guide - SKM Studio
Plan produced using PlanUp.



67 Marlowes, Hemel Hempstead, Hertfordshire, HP1 1LE
01442 233533 | www.squirestates.co.uk