



Parr Court, 12 Wilkes Close
London, NW7 1FE

squire | estates

Parr Court, 12 Wilkes Close, London

Stunning 2-Bedroom Apartment in Millbrook Park, Barnet.

Welcome to this two bedroom two bathroom apartment in the exclusive Millbrook Park development.

This stylish first-floor apartment boasts a bright, south-facing open-plan living area, complete with a generous balcony perfect for relaxing and entertaining. The modern kitchen comes fully equipped with high-quality appliances and offers ample space for dining.

The master bedroom features built-in wardrobes and an ensuite shower room for added convenience, while the second bedroom serves as a comfortable double room, ideal for guests or a home office. The family bathroom is well-appointed with a shower over the bath, providing functionality and comfort. Additionally, a utility cupboard conveniently located in the hall offers plumbing for a washing machine.

This apartment also includes an allocated parking space and access to beautifully landscaped communal areas, including the Officers Mess gardens and the Panoramic playground, perfect for outdoor leisure.

In terms of location, you're just a 5-minute walk from Mill Hill East Underground station (Zone 4), with a quick 22-minute commute to Kings Cross on the Northern Line.

For everyday essentials, a Co-op supermarket is conveniently located on-site, and a short 5-minute stroll will take you to Virgin Active and 8 minutes to Waitrose. Families will appreciate the proximity to highly-rated primary and secondary schools, many boasting 'Outstanding' Ofsted ratings.

Don't miss this opportunity to live in a beautifully designed apartment in one of Barnet's most sought-after locations! Contact us today to arrange a viewing.

Please note we have not tested any apparatus, fixtures, fittings, or services. Interested parties must undertake their own investigation into the working order of these items. All measurements are approximate and photographs provided for guidance only.



Features

- Two DOUBLE bedroom Two bathroom apartment
- Exclusive Millbrook Park development
- South facing open plan living
- Contemporary appliances kitchen
- Allocated parking space
- Close to open spaces
- Long Lease

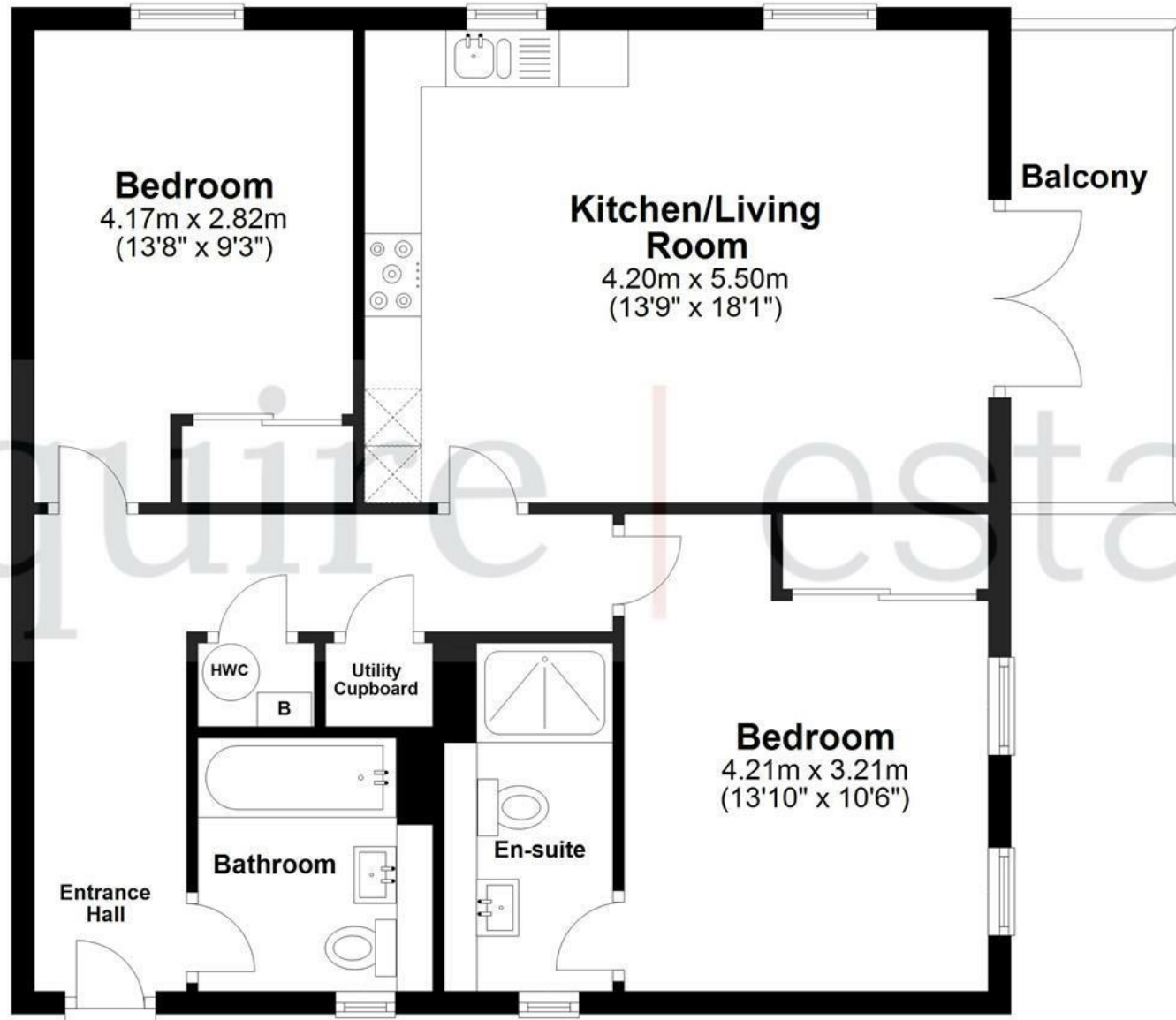
To Book a Viewing

Please contact Squire Estates on 01442 233533.

Energy Efficiency Rating		Current	Potential
<i>Very energy efficient - lower running costs</i>			
(92 plus) A		87	87
(81-91) B			
(69-80) C			
(55-68) D			
(39-54) E			
(21-38) F			
(1-20) G			
<i>Not energy efficient - higher running costs</i>			
England & Wales		EU Directive 2002/91/EC	

Floor Plan

Approx. 71.5 sq. metres (769.8 sq. feet)



Total area: approx. 71.5 sq. metres (769.8 sq. feet)

Disclaimer - Floor plan is for marketing purposes only and is to be used as a guide - SKM Studio
Plan produced using PlanUp.

