



Yeomans Court  
Hemel Hempstead, HP2 7GJ

squire | estates

---

## Yeomans Court, Hemel Hempstead

\*Redecorated throughout with Brand new carpets\*\* Beautifully presented 2/3 bedroom Grade 2 listed cottage with easy access to Hemel Town center and the M1. Comprising of two double bedrooms on the first floor, additional third double bedroom/reception room in the lower ground floor, kitchen, living room, tiled bathroom. Private gated development with private garden and Allocated Parking for Two Cars. Available Now!

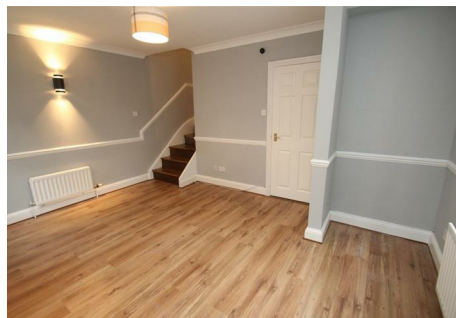
## Features

- Grade 2 Listed Cottage
- 2/3 Bedroom End of Terrace
- Redecorated throughout with Brand new carpets
- Private Secluded Garden
- Allocated Parking for Two Cars
- Available Now
- Private gated development
- PET FRIENDLY
- EPC - D
- Council tax - D

## To Book a Viewing

Please contact Squire Estates on 01442 233533.

Please note we have not tested any apparatus, fixtures, fittings, or services. Interested parties must undertake their own investigation into the working order of these items. All measurements are approximate and photographs provided for guidance only.



Energy Efficiency Rating		Current	Potential
Very energy efficient - lower running costs			
(92 plus) A			
(81-91) B			86
(69-80) C			
(55-68) D		61	
(39-54) E			
(21-38) F			
(1-20) G			
Not energy efficient - higher running costs			
England & Wales		EU Directive 2002/91/EC	







67 Marlowes, Hemel Hempstead, Hertfordshire, HP1 1LE  
01442 233533 | [www.squirestates.co.uk](http://www.squirestates.co.uk)