



Underacres Close
Hemel Hempstead, HP2 7AL

squire | estates

Underacres Close, Hemel Hempstead

Welcome to this charming apartment located in the desirable Underacres Close, Hemel Hempstead. This lovely property boasts a spacious lounge with a balcony, perfect for enjoying a cup of tea on a sunny afternoon. With two double bedrooms, this apartment offers ample space for a small family or professionals looking for a comfortable living space.

Situated on the first floor, this apartment provides a cosy and inviting atmosphere. The property features one bathroom, ideal for your daily routines.

The location of this apartment is truly convenient, being within walking distance to the industrial estate. This makes it an excellent choice for individuals working in the area, saving you time on commuting and allowing for a better work-life balance.

Available from 06/01/25

Features

- Two double bedrooms
- First floor
- Fitted kitchen
- Lounge with balcony
- Available from 06/01/25
- Large storage area one external
- Residents parking
- Walking distance to the industrial estate
- EPC - C
- Council Tax - B

To Book a Viewing

Please contact Squire Estates on 01442 233533.

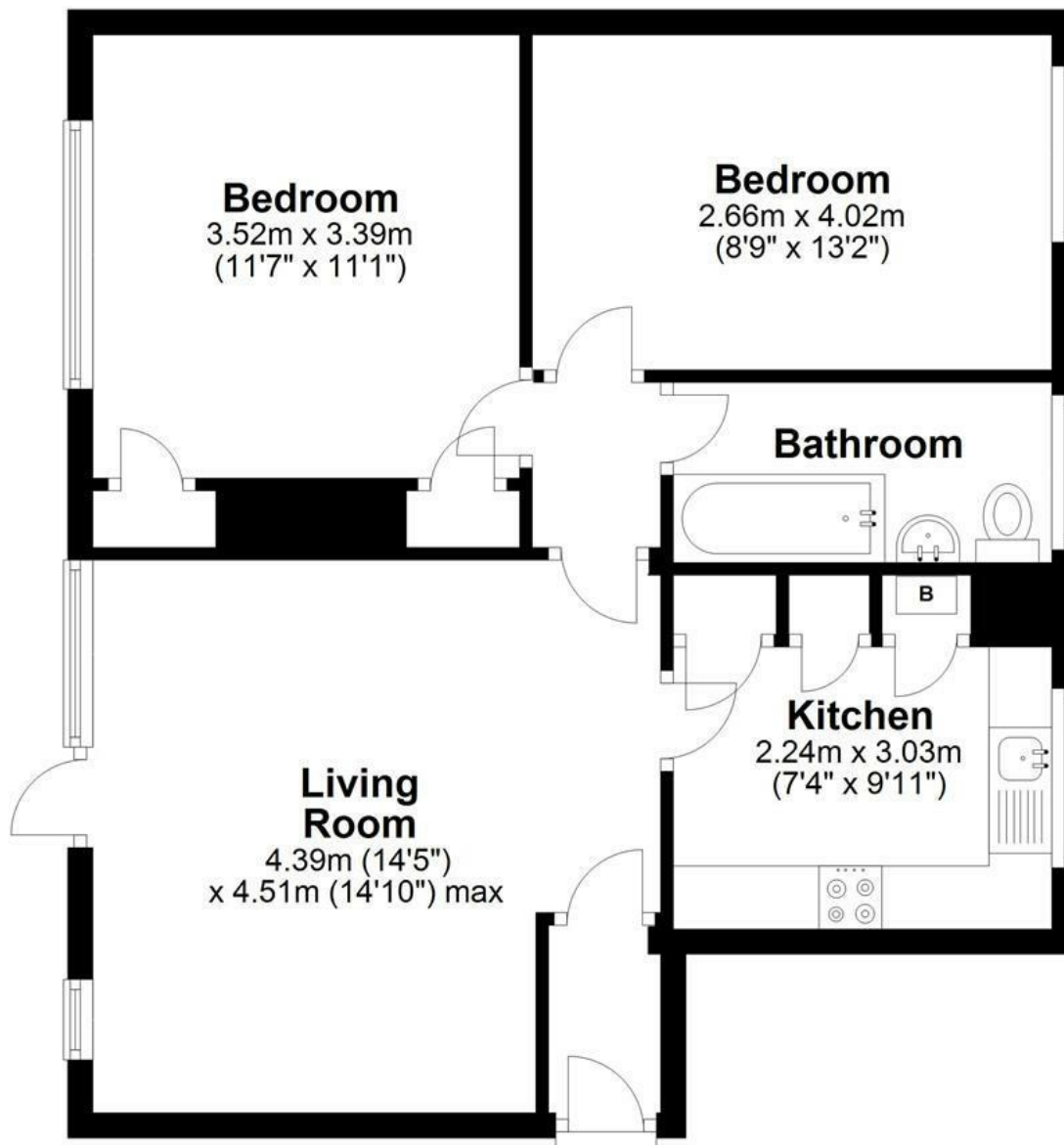
Please note we have not tested any apparatus, fixtures, fittings, or services. Interested parties must undertake their own investigation into the working order of these items. All measurements are approximate and photographs provided for guidance only.



Energy Efficiency Rating		
	Current	Potential
<i>Very energy efficient - lower running costs</i>		
(92 plus) A		
(81-91) B		
(69-80) C	76	81
(55-68) D		
(39-54) E		
(21-38) F		
(1-20) G		
<i>Not energy efficient - higher running costs</i>		
England & Wales	EU Directive 2002/91/EC	

Floor Plan

Approx. 60.3 sq. metres (648.8 sq. feet)



Total area: approx. 60.3 sq. metres (648.8 sq. feet)

Disclaimer - Floor plan is for marketing purposes only and is to be used as a guide - SKM Studio
Plan produced using PlanUp.



67 Marlowes, Hemel Hempstead, Hertfordshire, HP1 1LE
01442 233533 | www.squirestates.co.uk