

**Barnacres Road
Hemel Hempstead HP3 8JQ
£2,050 PCM**

- Four bedroom house
- Off road parking for 3 cars
- Large garden with outhouse/storage space
- Large modern kitchen area
- EPC - C
- Council Tax - D
- Walking distance to LONGDEAN SECONDARY SCHOOL & HOBBS HILL WOOD PRIMARY SCHOOL
- Bright & spacious
- Available Now
- Holding deposit - £470



67 Marlowes
Hemel Hempstead
Hertfordshire
HP1 1LE

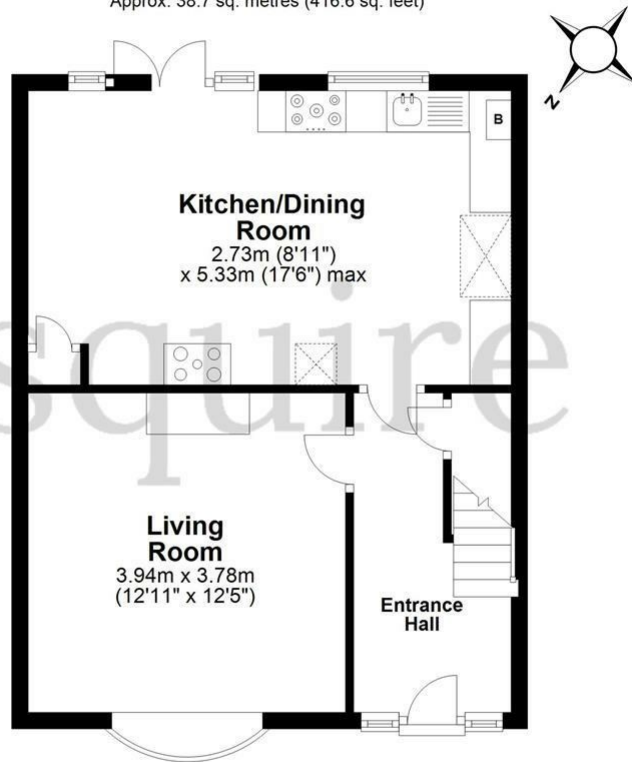
01442 233533

homes@squireestates.co.uk

squireestates.co.uk

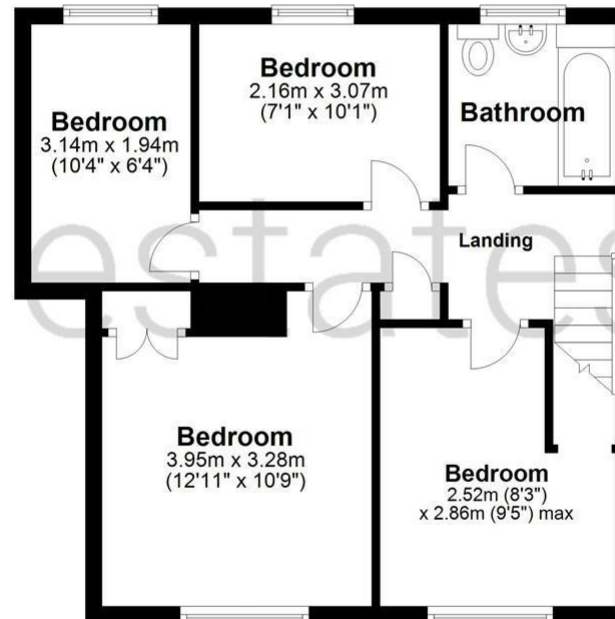
Ground Floor

Approx. 38.7 sq. metres (416.6 sq. feet)



First Floor

Approx. 46.7 sq. metres (502.4 sq. feet)



Total area: approx. 85.4 sq. metres (919.0 sq. feet)

The Floor Plan is not to Scale and measurements and areas shown are approximate and therefore should be used for illustrative purposes only. The plan has been prepared with due diligence and whilst we have confidence in the information produced it should not be relied upon. Maximum lengths and widths are represented on the plan. If there are any aspects of particular importance, you should carry out or commission your own inspection of the property. Copyright © SKMSTUDIO
Plan produced using PlanUp.