

**Swanmead
Hemel Hempstead HP3 9DQ
£1,400 PCM**

- Two Bedrooms
- Ground Floor
- Apsley Location
- Refurbished Throughout
- Walking distance to Mainline Train Station
- Allocated Parking for Two Cars
- Available Now
- EPC - C
- Council Tax - C
- Holding Deposit - £323



67 Marlowes
Hemel Hempstead
Hertfordshire
HP1 1LE

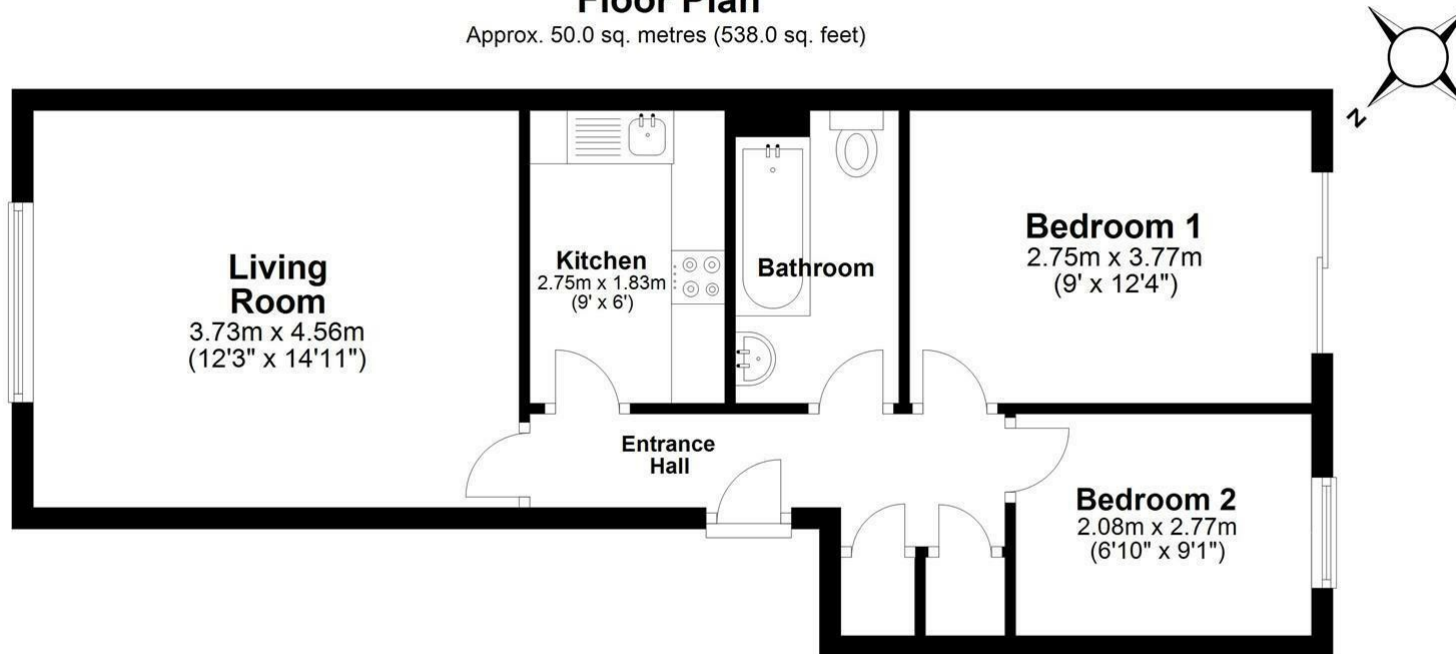
01442 233533

homes@squireestates.co.uk

squireestates.co.uk

Floor Plan

Approx. 50.0 sq. metres (538.0 sq. feet)



Total area: approx. 50.0 sq. metres (538.0 sq. feet)

Disclaimer - Floor plan is for marketing purposes only and is to be used as a guide.
Plan produced using PlanUp.