

**Maylands Avenue
Hemel Hempstead HP2 4SE
£850 PCM**

- Double room
- En-suite shower room
- Large kitchen
- Fully furnished
- Laundry room
- Single occupancy
- WiFi included
- Deposit £980
- Newly refurbished
- Parking available



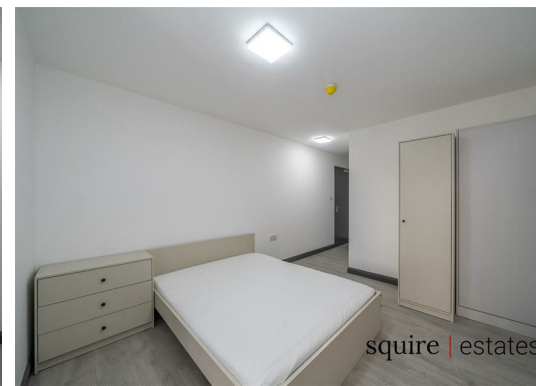
squire | estates



squire | estates



squire | estates



squire | estates

67 Marlowes
Hemel Hempstead
Hertfordshire
HP1 1LE

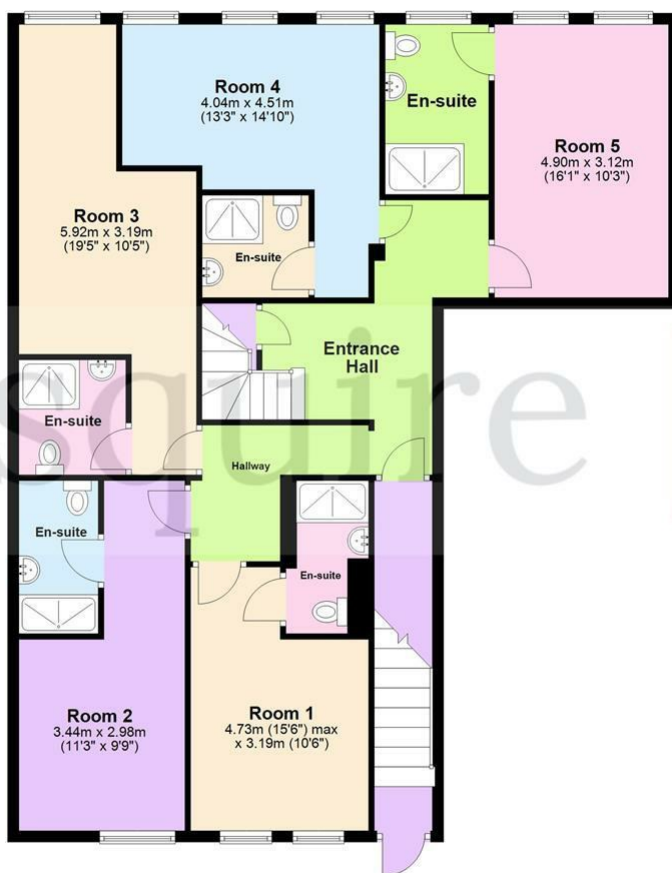
01442 233533

homes@squireestates.co.uk

squireestates.co.uk

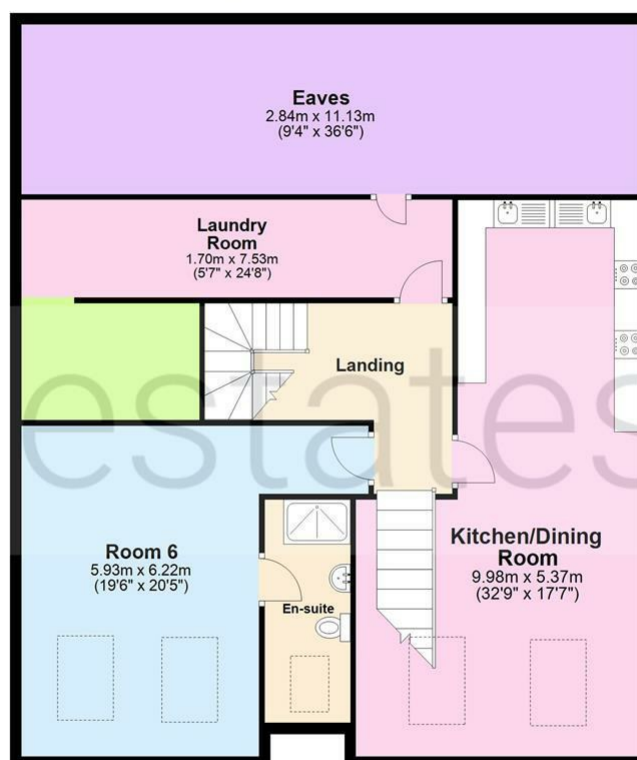
Floor Plan

Approx. 127.7 sq. metres (1374.5 sq. feet)



Floor Plan

Approx. 144.0 sq. metres (1550.0 sq. feet)



Total area: approx. 271.7 sq. metres (2924.6 sq. feet)

The Floor Plan is not to Scale and measurements and areas shown are approximate and therefore should be used for illustrative purposes only. The plan has been prepared with due diligence and whilst we have confidence in the information produced it should not be relied upon. Maximum lengths and widths are represented on the plan. If there are any aspects of particular importance, you should carry out or commission your own inspection of the property. Copyright © SKMSTUDIO
Plan produced using PlanUp.