



Bowmans Court
Hemel Hempstead, HP2 5SD

squire | estates

Bowmans Court, Hemel Hempstead

This delightful one-bedroom freehold house is an ideal home, offering a comfortable living space and a charming rear garden.

The property features an applianced fitted kitchen with wall and base units, perfect for cooking and storage. The lounge, with stairs leading to the first floor, offers a cozy and inviting space, and benefits from convenient under stairs storage. From the lounge, doors open to the rear garden, extending the living area outdoors.

Upstairs, you'll find a good-sized bedroom with fitted wardrobes and windows that overlook the peaceful rear garden, allowing plenty of natural light. The bathroom includes a bath with a shower over, a WC, and a wash hand basin.

Externally, the rear garden benefits from a rear gate leading onto the parking area, providing added convenience. To the front, there is a generous storage shed and a small gated garden, offering an extra touch of privacy and security.

Located in a quiet cul-de-sac, this property is just a 5-minute walk from local shops, including a Tesco Metro, and nearby amenities, making it a convenient and peaceful place to call home.

Please note we have not tested any apparatus, fixtures, fittings, or services. Interested parties must undertake their own investigation into the working order of these items. All measurements are approximate and photographs provided for guidance only.




Features

- ONE bedroom house
- Freehold
- Rear garden
- Lounge with doors onto rear garden
- Cull de sac location with parking places
- Good size bedroom with wardrobes
- External storage
- Applianced kitchen
- NO CHAIN

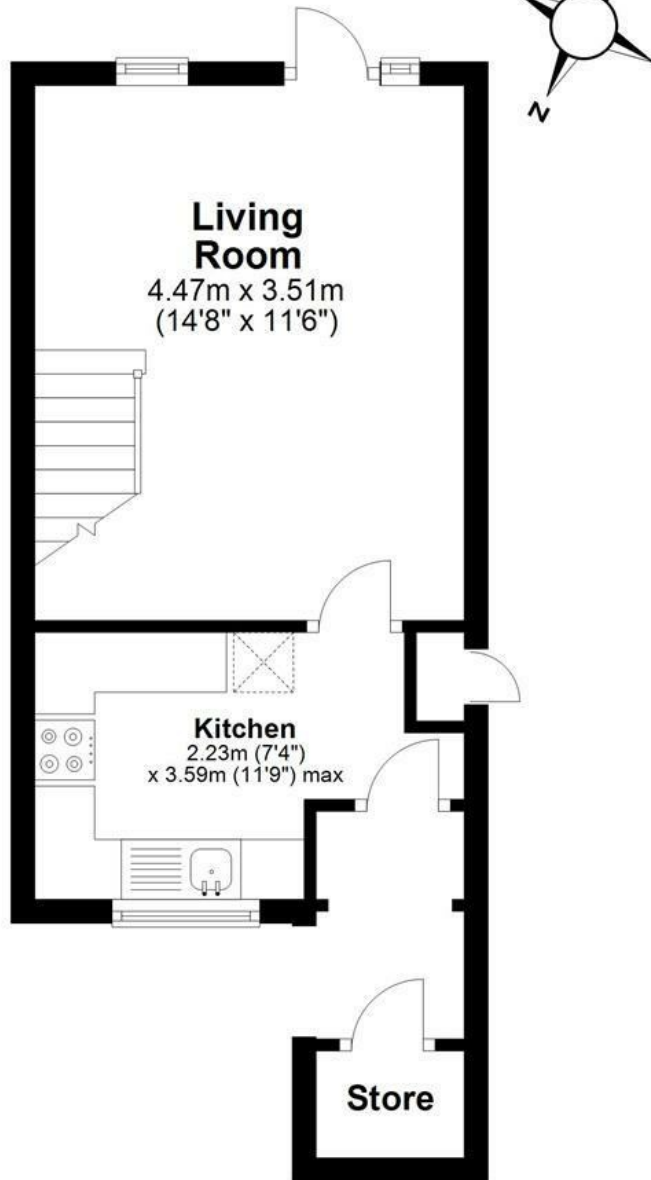
To Book a Viewing

Please contact Squire Estates on 01442 233533.

Energy Efficiency Rating		Current	Potential
<i>Very energy efficient - lower running costs</i>			
(92 plus) A			92
(81-91) B		75	
(69-80) C			
(55-68) D			
(39-54) E			
(21-38) F			
(1-20) G			
<i>Not energy efficient - higher running costs</i>			
England & Wales		EU Directive 2002/91/EC	

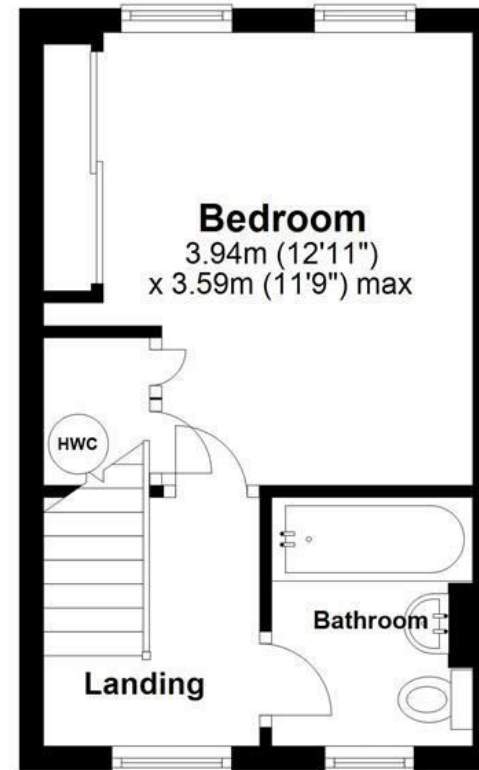
Ground Floor

Approx. 26.7 sq. metres (287.9 sq. feet)



First Floor

Approx. 21.4 sq. metres (230.5 sq. feet)



Total area: approx. 48.2 sq. metres (518.4 sq. feet)

Disclaimer - Floor plan is for marketing purposes only and is to be used as a guide - SKM Studio
Plan produced using PlanUp.

