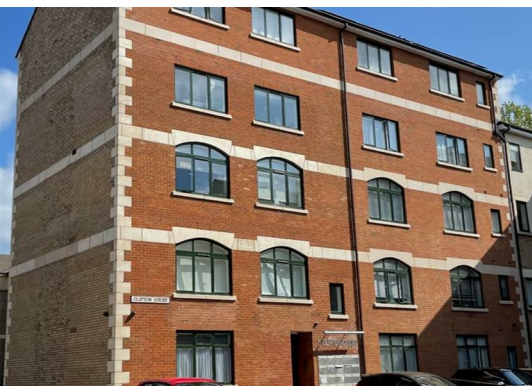


**Clifton Court  
Hemel Hempstead HP3 9XY  
£1,225 PCM**

- Communal Sky dish
- Fully Furnished
- Allocated Parking Space
- Passenger Lift
- First Floor
- One bedroom
- Close to Station & Town Centre
- Available from 16/05/2025
- EPC - C
- Council tax - C



67 Marlowes  
Hemel Hempstead  
Hertfordshire  
HP1 1LE

01442 233533

homes@squireestates.co.uk

squireestates.co.uk

### Floor Plan

Approx. 32.3 sq. metres (347.8 sq. feet)



Total area: approx. 32.3 sq. metres (347.8 sq. feet)