

**Windmill Road  
Hemel Hempstead HP2 4BX  
£1,250 PCM**

- Spacious Ground Floor Studio Apartment
- Large private Rear Garden
- Separate Kitchen With Appliances
- Fully Furnished
- Recently Redecorated
- Council tax - B
- EPC - D
- Available Now
- Holding deposit - £285

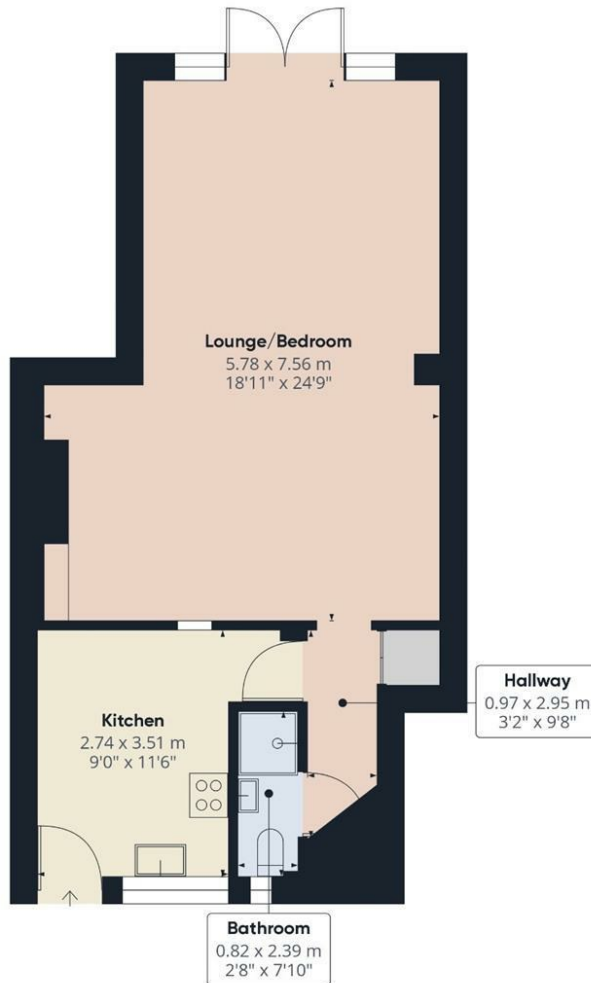


67 Marlowes  
Hemel Hempstead  
Hertfordshire  
HP1 1LE

01442 233533

homes@squireestates.co.uk

squireestates.co.uk



**Approximate total area<sup>(1)</sup>**

52.17 m<sup>2</sup>  
561.55 ft<sup>2</sup>

(1) Excluding balconies and terraces

While every attempt has been made to ensure accuracy, all measurements are approximate, not to scale. This floor plan is for illustrative purposes only.

Calculations are based on RICS IPMS 3C standard.