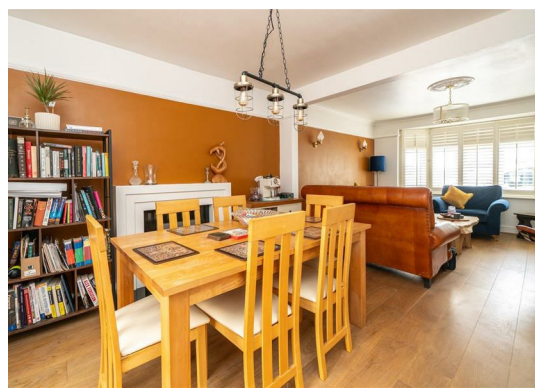


**Stratford Way  
Hemel Hempstead HP3 9AS  
£2,000 PCM**

- SHORT TERM LET ONLY -  
Detached 3 bedroom house
- Well presented
- Off road parking
- PETS ACCEPTED
- Close the Train station
- Garage INCLUDED
- Available from 26/05/25
- EPC - E
- Council Tax - C
- Holding deposit - £461



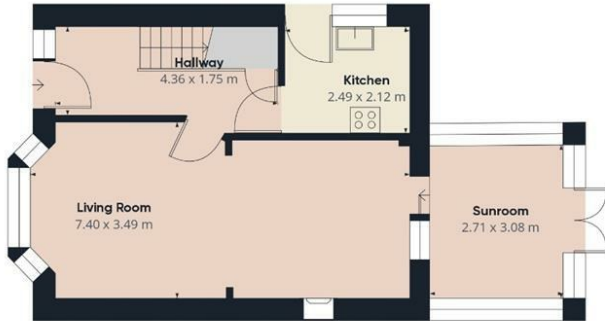


67 Marlowes  
Hemel Hempstead  
Hertfordshire  
HP1 1LE

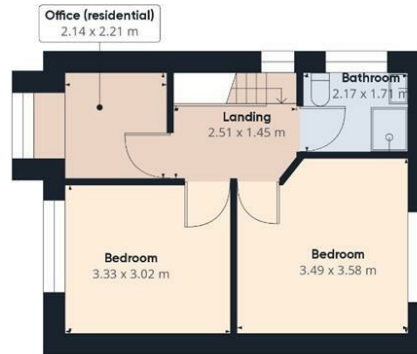
01442 233533

homes@squireestates.co.uk

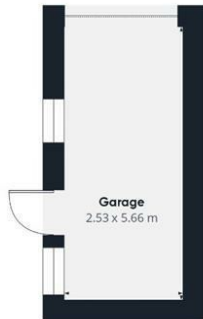
squireestates.co.uk



Ground Floor Building 1



Floor 1 Building 1



Ground Floor Building 2

Approximate total area<sup>(1)</sup>  
95.08 m<sup>2</sup>

(1) Excluding balconies and terraces

While every attempt has been made to ensure accuracy, all measurements are approximate, not to scale. This floor plan is for illustrative purposes only.

Calculations are based on RICS IPMS 3C standard.