

Arkley Court
Hemel Hempstead HP2 7JT
£1,250 PCM

- Two Bedrooms
- First Floor
- Close to Industrial Estate
- Communal gardens
- Walking distance to local shops & schools
- Available from 14/06/25
- Council Tax - B
- EPC - E
- Holding Deposit - £288



67 Marlowes
Hemel Hempstead
Hertfordshire
HP1 1LE

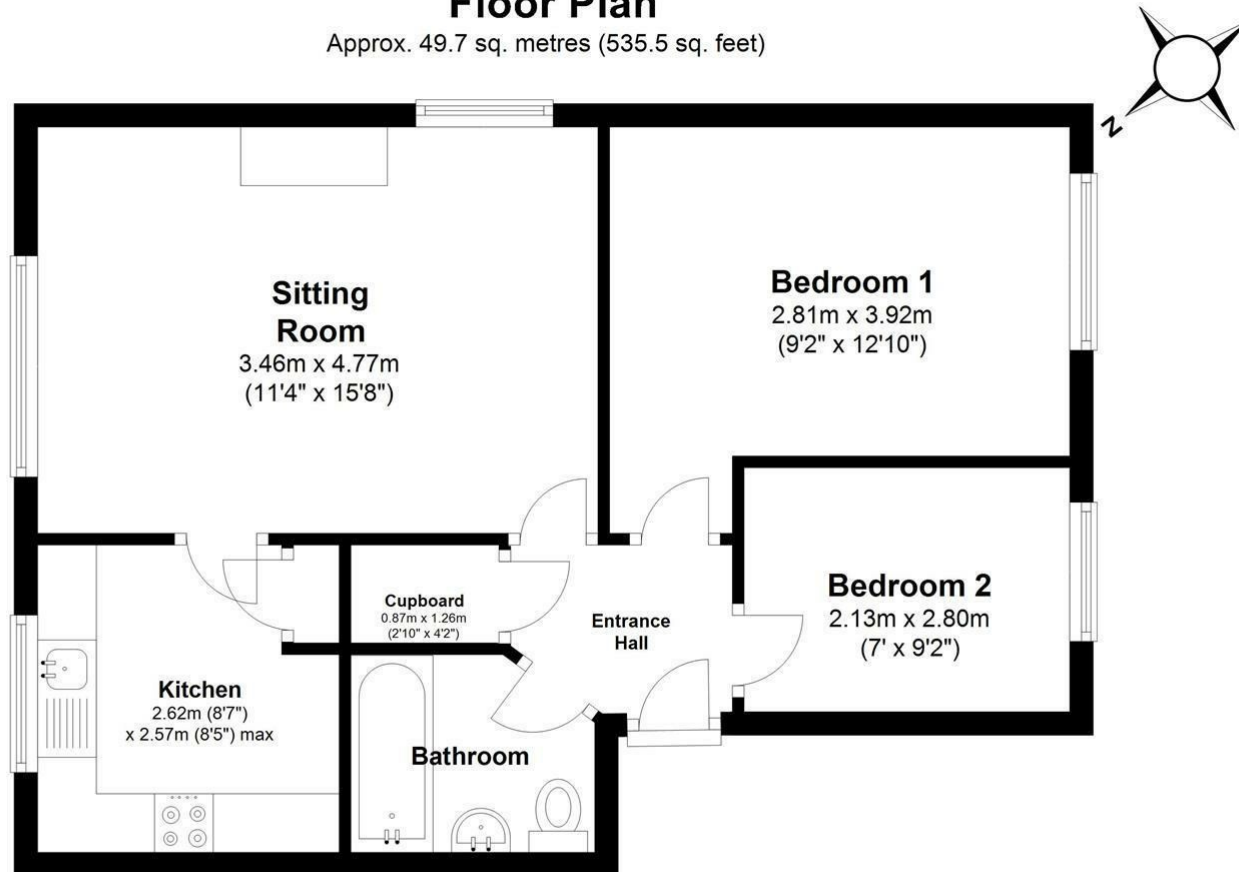
01442 233533

homes@squireestates.co.uk

squireestates.co.uk

Floor Plan

Approx. 49.7 sq. metres (535.5 sq. feet)



Total area: approx. 49.7 sq. metres (535.5 sq. feet)

Disclaimer - Floor plan is for marketing purposes only and is to be used as a guide.
Plan produced using PlanUp.