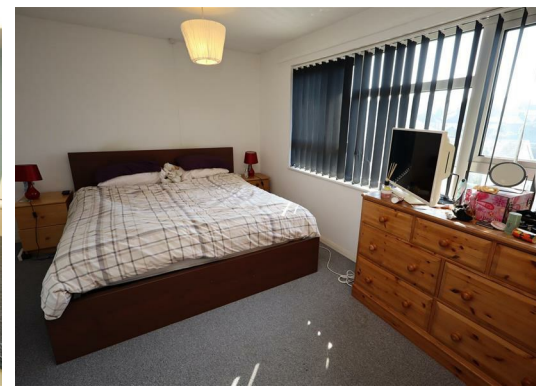


**Figtree Hill
Hemel Hempstead HP2 5HG
£1,400 PCM**

- Two Double Bedroom Duplex Apartment
- Close To The Old Town
- Part-Furnished
- Gas Central Heating
- Bright and spacious
- Available from 7th June 2025
- EPC - C
- Council tax - B
- Holding deposit - £323



67 Marlowes
Hemel Hempstead
Hertfordshire
HP1 1LE

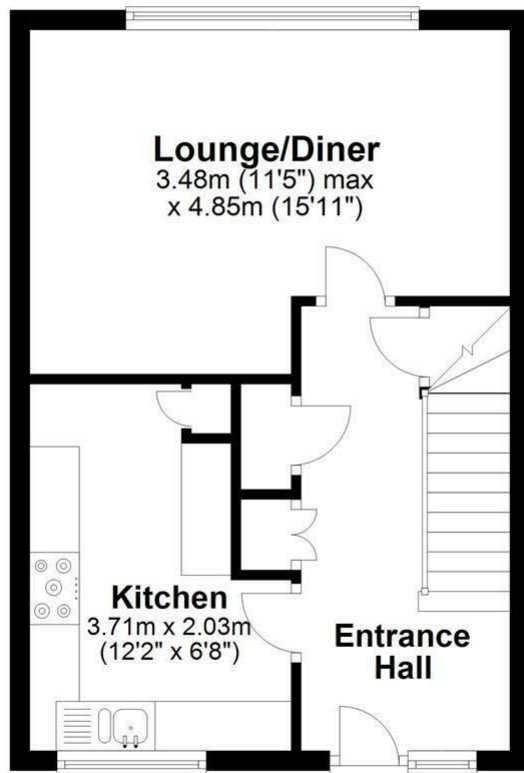
01442 233533

homes@squireestates.co.uk

squireestates.co.uk

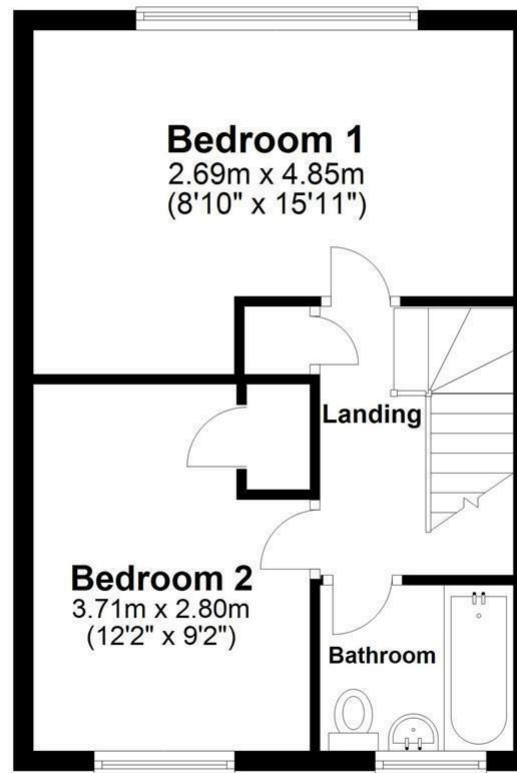
First Floor

Approx. 34.7 sq. metres (373.6 sq. feet)



Second Floor

Approx. 35.3 sq. metres (379.5 sq. feet)



Total area: approx. 70.0 sq. metres (753.1 sq. feet)

Disclaimer - Floor plan is for marketing purposes only and is to be used as a guide.
Plan produced using PlanUp.