

**St. Johns Road  
Hemel Hempstead HP1 1NP  
£1,600 PCM**

- Two double bedroom character cottage
- 6-12 month rental Only
- Close to station
- Two reception rooms
- Gas central Heating & Double glazing
- Off road parking
- Available Now
- EPC - D
- Council Tax - D





67 Marlowes  
Hemel Hempstead  
Hertfordshire  
HP1 1LE

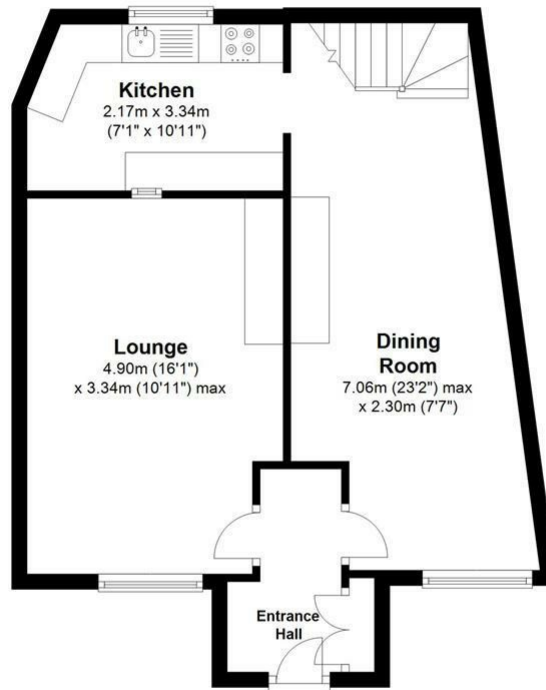
01442 233533

homes@squireestates.co.uk

squireestates.co.uk

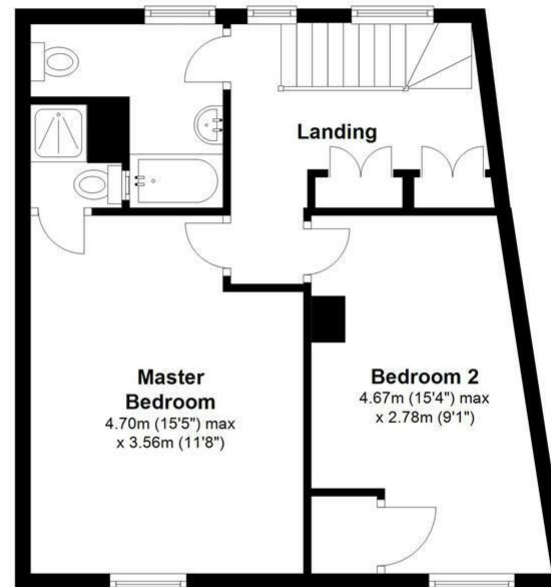
### Ground Floor

Approx. 46.5 sq. metres (500.5 sq. feet)



### First Floor

Approx. 44.5 sq. metres (478.9 sq. feet)



Total area: approx. 91.0 sq. metres (979.3 sq. feet)

Disclaimer - Floor plan is for marketing purposes only and is to be used as a guide.  
Plan produced using PlanUp.