



Feacey Down  
Hemel Hempstead, HP1 3ES

squire | estates

---



## Feacey Down, Hemel Hempstead

Introducing a stunning 2-bedroom ground floor maisonette that offers luxurious living in a desirable location. Step inside to discover a beautifully designed space featuring a range of high-quality features and finishes.

As you enter the property, you are greeted by an open plan kitchen and living area that exudes elegance. The kitchen boasts quality appliances and is thoughtfully integrated into the living space, allowing for seamless entertaining and socializing. The open layout creates a bright and airy atmosphere, complemented by natural light flowing in through the French doors that lead to the garden.

Speaking of the garden, prepare to be amazed by this outdoor oasis which features a large decking area, perfect for al fresco dining or simply enjoying a morning coffee in the fresh air. The lawn is bordered by flower beds, adding a touch of colour and vibrancy to the space. A shed provides convenient storage for your outdoor essentials.

The main double bedroom of this maisonette boasts a range of built-in wardrobes, offering ample storage for your clothing and personal belongings. The second bedroom is also of a good size. The maisonette also offers a high quality shower room with a walk in shower cubicle, vanity sink and wc.

Additionally, this property offers a second garden area, laid to patio, providing yet another space to unwind or entertain guests. The versatility of having multiple outdoor areas is a rare find and offers endless possibilities for creating your own personal retreat.

For added convenience, this maisonette comes with an allocated parking place, ensuring you have a secure spot for your vehicle. Don't miss the opportunity to make this property your own.

Please note we have not tested any apparatus, fixtures, fittings, or services. Interested parties must undertake their own investigation into the working order of these items. All measurements are approximate and photographs provided for guidance only.

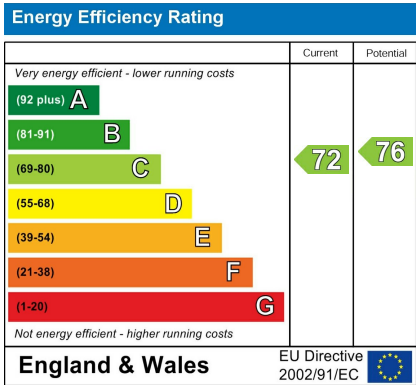


## Features

- Ground Floor maisonette
- TWO bedrooms
- Beautiful garden
- Stylish kitchen area with appliances
- Main bedroom with built in wardrobes
- Luxury Shower room
- Second patio garden
- Allocated parking

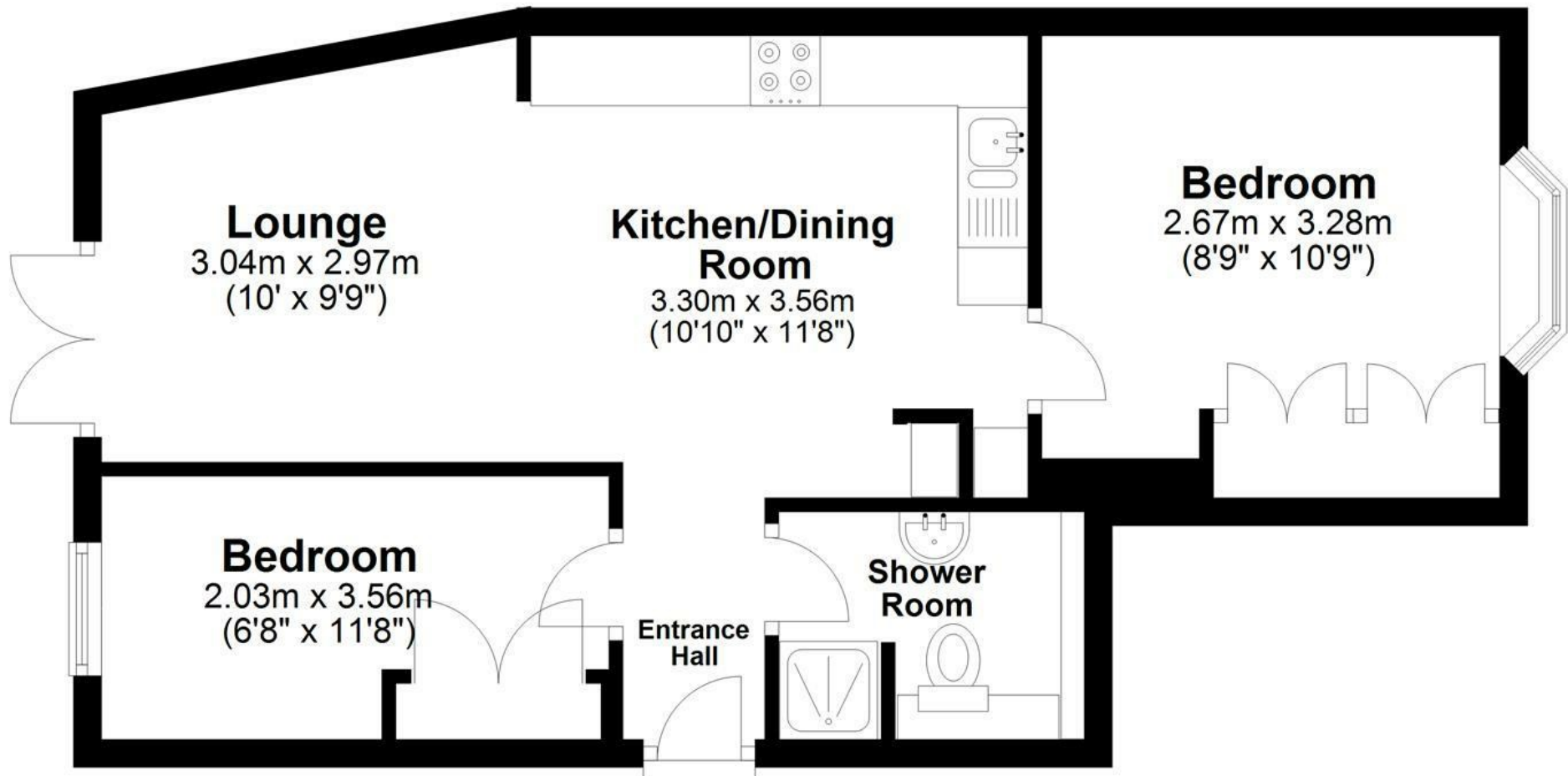
## To Book a Viewing

Please contact Squire Estates on 01442 233533.



## Ground Floor

Approx. 45.7 sq. metres (492.1 sq. feet)



Total area: approx. 45.7 sq. metres (492.1 sq. feet)

Disclaimer - Floor plan is for marketing purposes only and is to be used as a guide - SKM Studio

Plan produced using PlanUp.





67 Marlowes, Hemel Hempstead, Hertfordshire, HP1 1LE  
01442 233533 | [www.squirestates.co.uk](http://www.squirestates.co.uk)