



TO
LET

Windmill Road, Hemel Hempstead
£1,950 pcm

squire | estates



187 Windmill Road

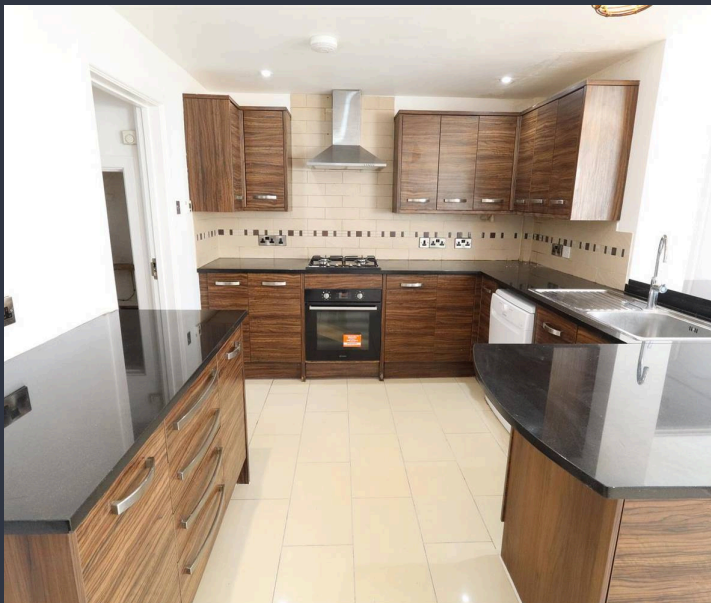
Hemel Hempstead

Well-presented three-bedroom house with open-plan kitchen, modern bathroom, private driveway, and EPC D. Close to shops and schools. Ideal for families or professionals.

Council Tax band: TBD

EPC Energy Efficiency Rating: D

EPC Environmental Impact Rating: D



squire | estates

67 Marlowes, Hemel Hempstead
Hertfordshire HP1 1LE
t. 01442 233533

www.squireestates.co.uk