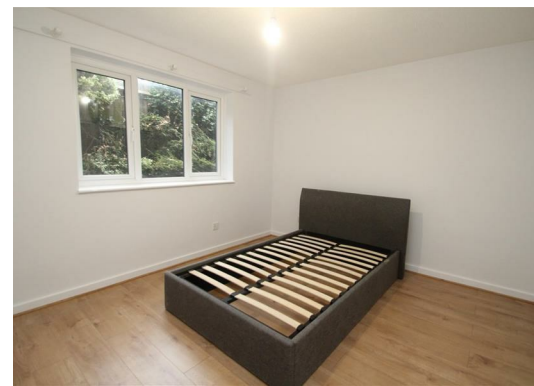


**Fairhill
Hemel Hempstead HP3 9UU
£1,500 PCM**

- Two double bedrooms
- Ground floor
- Walking distance to Apsley Train station
- Allocated parking with extra visitor parking available
- Close to local schools & Amenities
- Communal gardens
- Available from 14/06/25
- EPC - D
- Council Tac - C
- Holding deposit - £346



67 Marlowes
Hemel Hempstead
Hertfordshire
HP1 1LE

01442 233533

homes@squireestates.co.uk

squireestates.co.uk

Ground Floor

Approx. 61.1 sq. metres (657.9 sq. feet)



Total area: approx. 61.1 sq. metres (657.9 sq. feet)

This floorplan is not to scale. It's for guidance only and accuracy is not guaranteed.
Plan produced using PlanUp.