



Room 3 85a High Street, Hemel Hempstead, Herts HP1 3AH

£775 PCM

Nestled in the charming Old Town of Hemel Hempstead, this delightful room offers a unique blend of modern comfort and historical character. Located on the bustling High Street, residents will enjoy easy access to a variety of local shops, cafes, and amenities, making it an ideal spot for those who appreciate the vibrancy of town life.

This fully furnished room boasts an ensuite shower room, providing both privacy and convenience. The thoughtful design ensures that every inch of space is utilised effectively, making it perfect for individuals seeking a comfortable living arrangement. The property retains several original features, adding a touch of elegance and charm that is often hard to find in modern accommodations.

For added security and peace of mind, the property is equipped with an entry phone system, allowing residents to control access to their home. This room is perfect for anyone looking to enjoy the best of both worlds: the lively atmosphere of Old Town and the comfort of a well-appointed living space.

This room on High Street is an excellent choice for a single professional. Embrace the opportunity to live in a property that combines modern amenities with historical allure in one of Hemel Hempstead's most sought-after locations.

Available 5th July

ENTRANCE HALL

With a grand sweeping staircase leading to floors 1 and 2, french doors leading to a small terrace area with stunning views, stairs leading to basement.

KITCHEN

A shared kitchen with a range of white fitted kitchen with a range of wall and base level units with work tops over, stainless steel sink with mixer taps, oven with hob, free standing fridge and freezer.

UTILITY ROOM

Housing washer and dryer.

BEDROOM

11'1" x 9'2" (3.4 x 2.8)

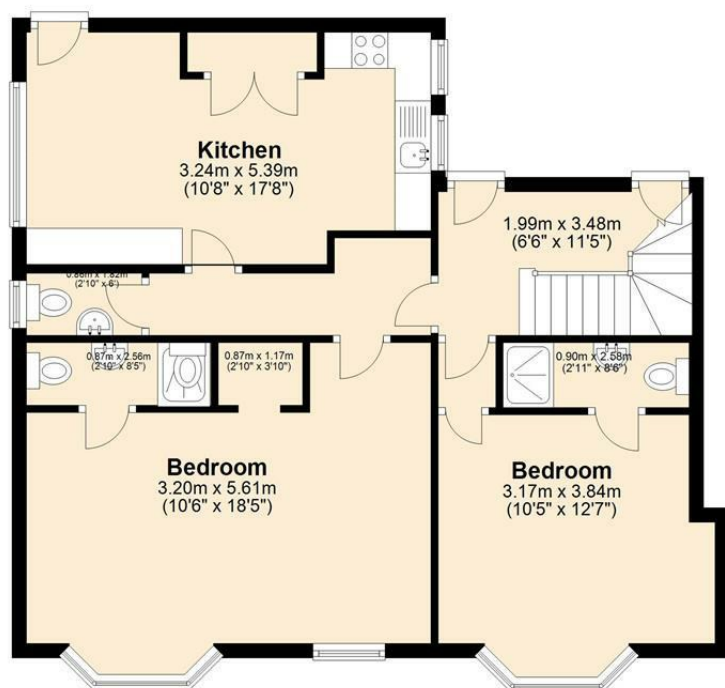
With sash window with fitted blinds, chrome vintage style bed, built in wardrobes , white bedside table and matching draws, security entrance phone.

EN SUITE

A modern en suite with walk in shower with thermostatic controlled shower, low flush toilet and wash hand basin.

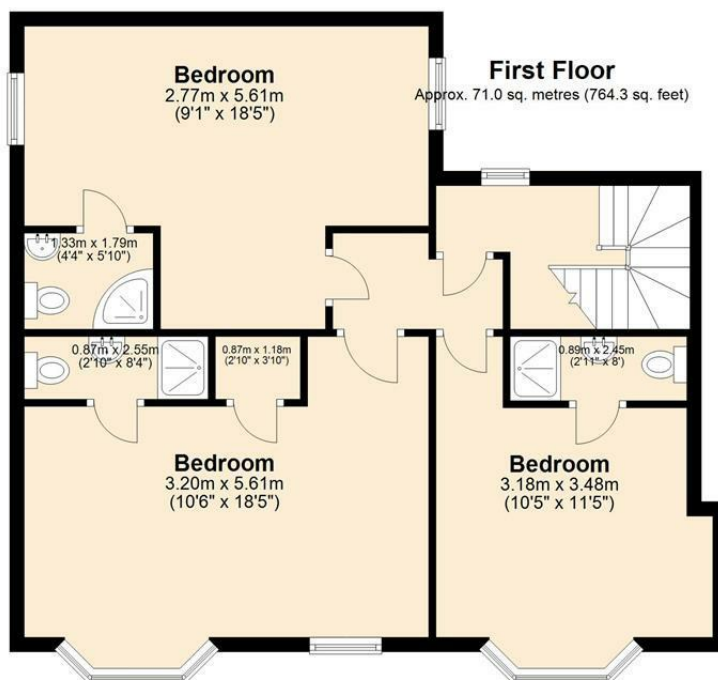
Ground Floor

Approx. 70.6 sq. metres (759.9 sq. feet)



First Floor

Approx. 71.0 sq. metres (764.3 sq. feet)



Total area: approx. 141.6 sq. metres (1524.2 sq. feet)

