

**Stevenage Rise
Hemel Hempstead HP2 6BH
£1,500 PCM**

- Three Double Bedrooms
- En-suite
- Balcony
- Residents Parking
- Gated Communal Gardens
- Gas central heating
- EPC - C
- Council Tax - B
- Available from 03/06/25
- Holding deposit - £345



67 Marlowes
Hemel Hempstead
Hertfordshire
HP1 1LE

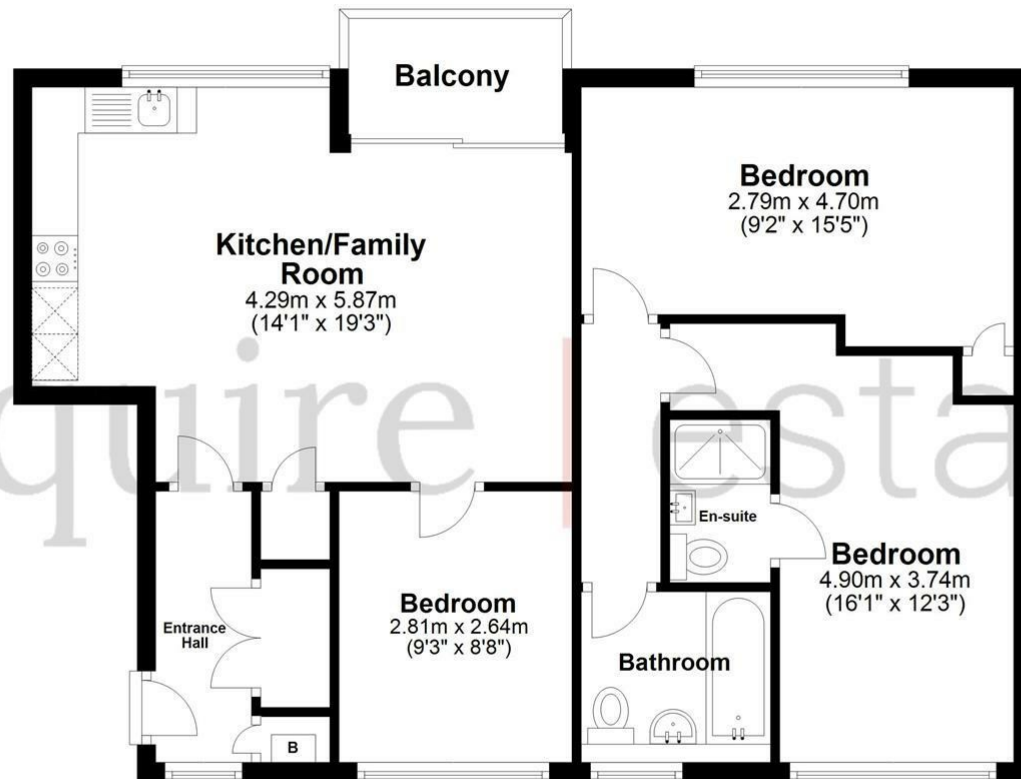
01442 233533

homes@squireestates.co.uk

squireestates.co.uk

First Floor

Approx. 71.7 sq. metres (771.3 sq. feet)



Total area: approx. 71.7 sq. metres (771.3 sq. feet)

The Floor Plan is not to Scale and measurements and areas shown are approximate and therefore should be used for illustrative purposes only. The plan has been prepared with due diligence and whilst we have confidence in the information produced it should not be relied upon. Maximum lengths and widths are represented on the plan. If there are any aspects of particular importance, you should carry out or commission your own inspection of the property. Copyright © SKMSTUDIO

Plan produced using PlanUp.