

**Fourdrinier Way
Hemel Hempstead HP3 9RP
£1,400 PCM**

- Two double bedrooms
- One allocated covered parking space
- Spacious lounge
- Open plan kitchen with integrated appliances
- First floor
- Apsley Village location
- Available from 31/07/25
- EPC - B
- Council tax - C
- Holding deposit - £323



67 Marlowes
Hemel Hempstead
Hertfordshire
HP1 1LE

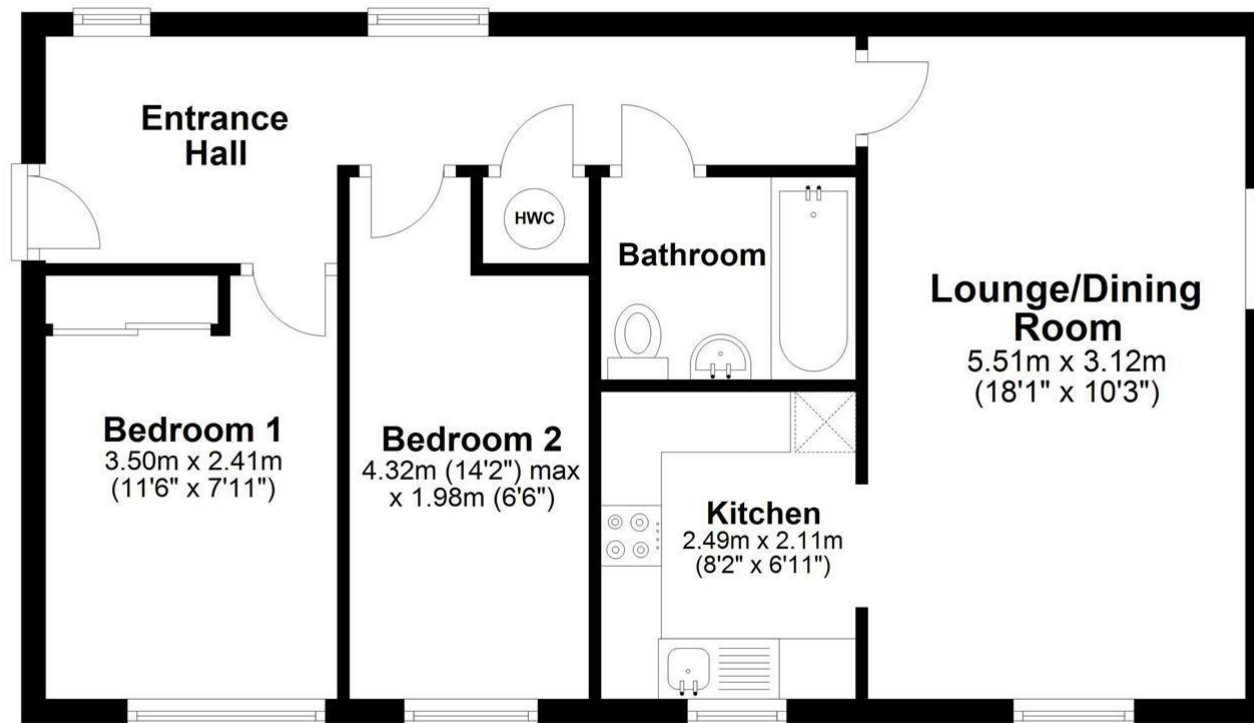
01442 233533

homes@squireestates.co.uk

squireestates.co.uk

Floor Plan

Approx. 54.4 sq. metres (585.6 sq. feet)



Total area: approx. 54.4 sq. metres (585.6 sq. feet)

Disclaimer - Floor plan is for marketing purposes only and is to be used as a guide.
Plan produced using PlanUp.