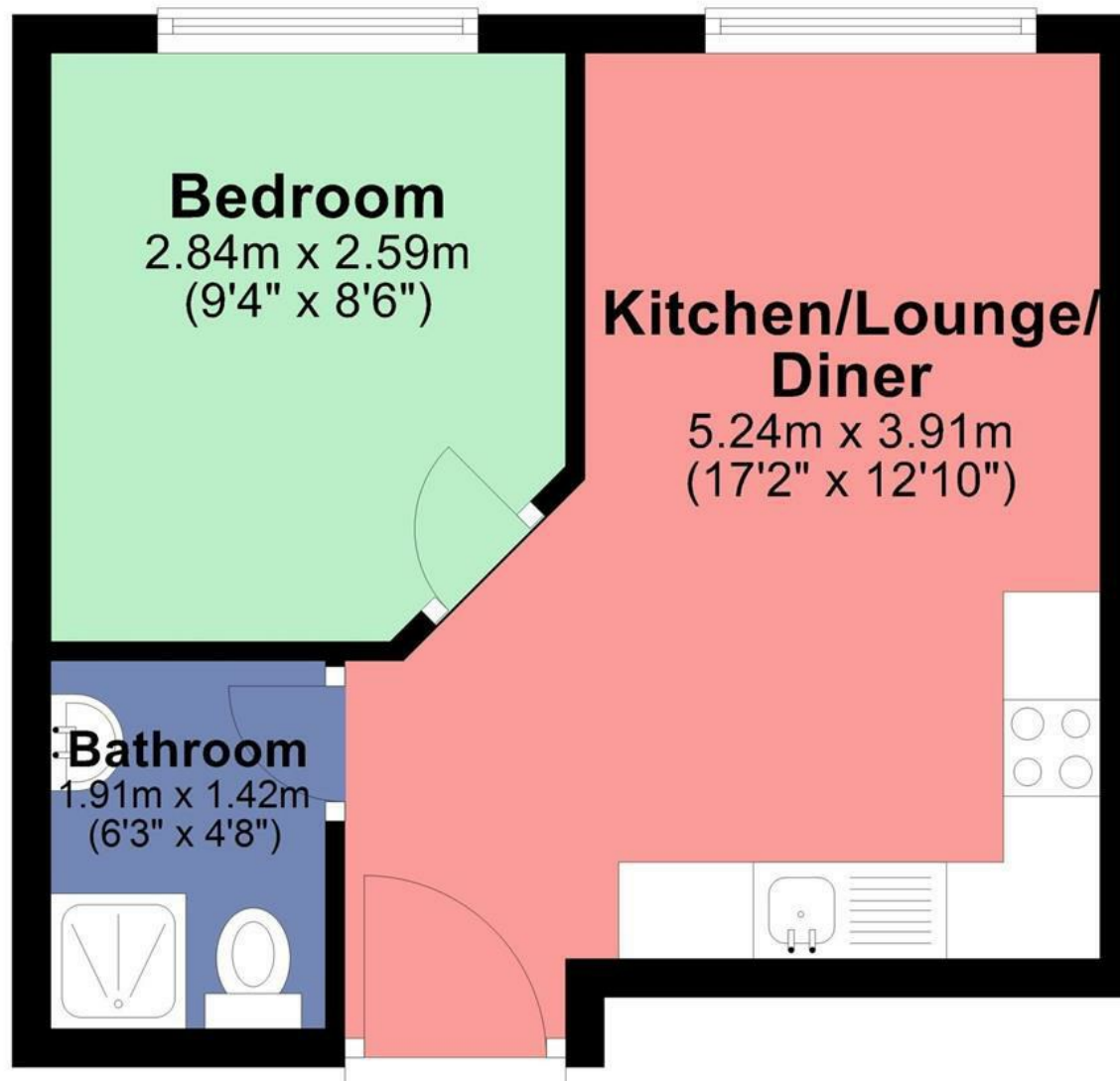


Swan Court
Hemel Hempstead HP1 1DS
£950 PCM

- One Bedroom Modern Apartment
- Town Centre Location
- Immaculate Finish
- Walking Distance To Train Station
- Close To Local Amenities
- Communal lifts
- Available from 30/06/25
- 4th Floor
- EPC D
- Council Tax B



Approx. 26.8 sq. metres (288.0 sq. feet)



l area: approx. 26.8 sq. metres (288.0 sq.

67 Marlowes
Hemel Hempstead
Hertfordshire
HP1 1LE

01442 233533

homes@squireestates.co.uk

squireestates.co.uk