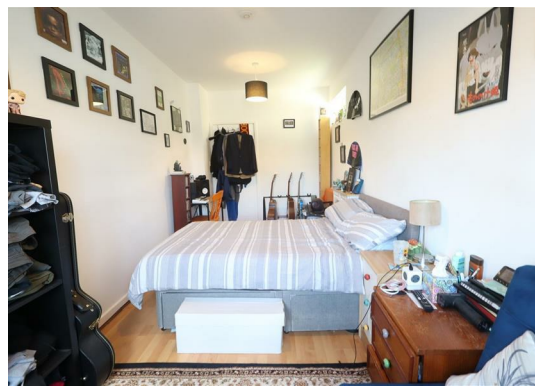
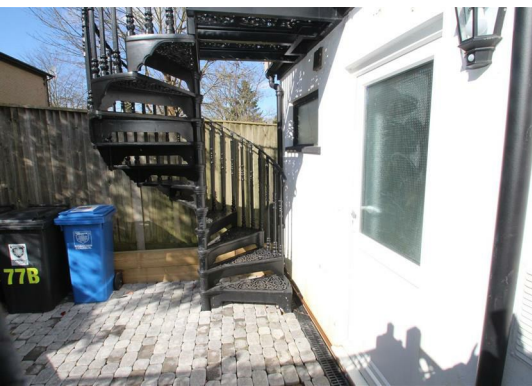


**London Road
Hemel Hempstead HP3 9SP
£900 PCM**

- Modern studio flat
- Walking distance to BR station
- Separate kitchen
- Close to amenities
- permit parking space
- Available from 04/10/2025
- EPC - D
- Council tax - A

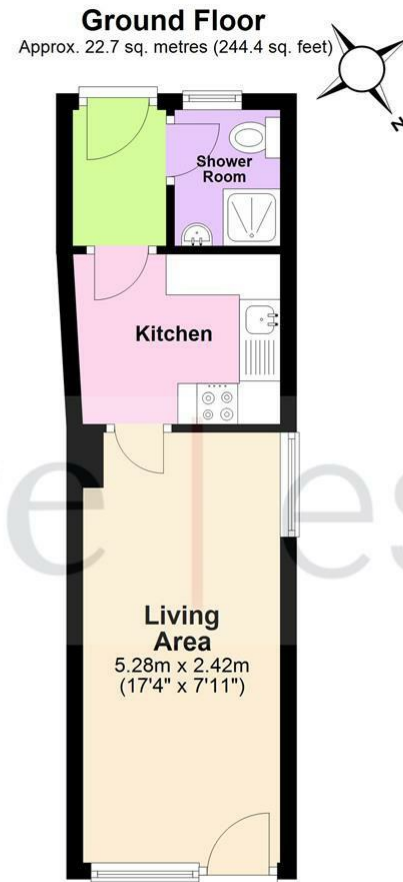


67 Marlowes
Hemel Hempstead
Hertfordshire
HP1 1LE

01442 233533

homes@squireestates.co.uk

squireestates.co.uk



Total area: approx. 22.7 sq. metres (244.4 sq. feet)

The Floor Plan is not to Scale and measurements and areas shown are approximate and therefore should be used for illustrative purposes only. The plan has been prepared with due diligence and whilst we have confidence in the information produced it should not be relied upon. Maximum lengths and widths are represented on the plan. If there are any aspects of particular importance, you should carry out or commission your own inspection of the property. Copyright © SKMSTUDIO
Plan produced using PlanUp. 