

**Underacres Close
Hemel Hempstead HP2 7AL
£1,600 PCM**

- Two double bedrooms
- First floor
- Fitted kitchen
- Lounge with balcony
- Residents parking
- Large storage area one external
- EPC - C
- Council Tax - B
- Available NOW
- Holding deposit - £380

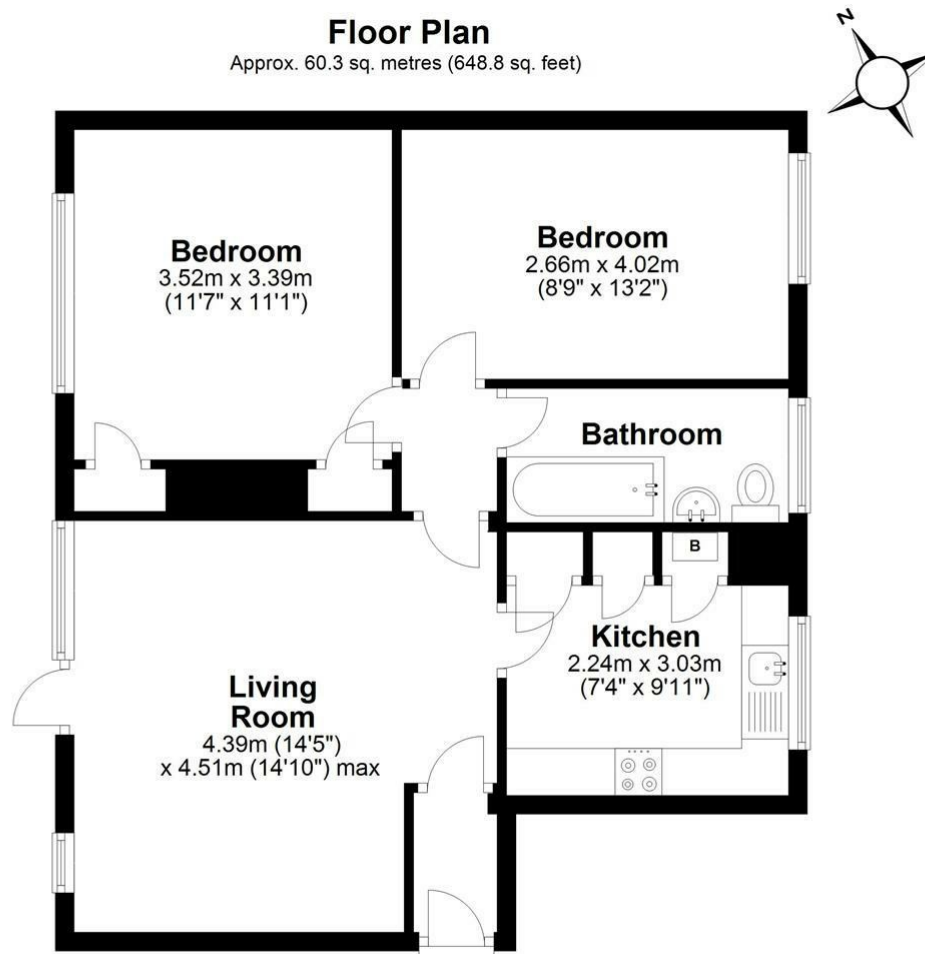


67 Marlowes
Hemel Hempstead
Hertfordshire
HP1 1LE

01442 233533

homes@squireestates.co.uk

squireestates.co.uk



Total area: approx. 60.3 sq. metres (648.8 sq. feet)

Disclaimer - Floor plan is for marketing purposes only and is to be used as a guide - SKM Studio
Plan produced using PlanUp.