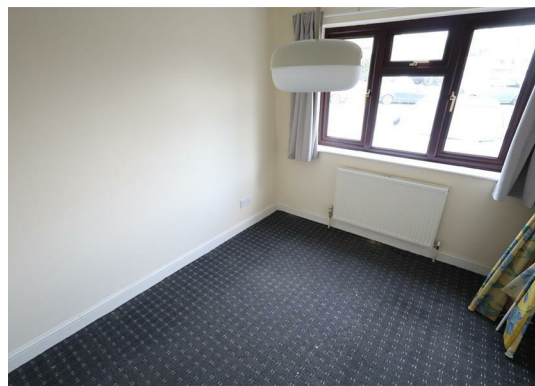


**Lawn Lane  
Hemel Hempstead HP3 9JF  
£1,900 PCM**

- Detached House
- Three Bedrooms
- Large Kitchen
- Split over 3 floors
- Built in storage to Master
- Driveway for 2 cars
- Gated rear garden
- EPC Rating D
- Council Tax Band E
- Holding Deposit £438



67 Marlowes  
Hemel Hempstead  
Hertfordshire  
HP1 1LE

01442 233533

homes@squireestates.co.uk

squireestates.co.uk

### Lower Ground Floor

Approx. 22.2 sq. metres (239.2 sq. feet)



### Ground Floor

Approx. 33.6 sq. metres (361.4 sq. feet)



### First Floor

Approx. 36.6 sq. metres (394.1 sq. feet)



Total area: approx. 92.4 sq. metres (994.7 sq. feet)

The Floor Plan is not to Scale and measurements and areas shown are approximate and therefore should be used for illustrative purposes only. The plan has been prepared with due diligence and whilst we have confidence in the information produced it should not be relied upon. Maximum lengths and widths are represented on the plan. If there are any aspects of particular importance, you should carry out or commission your own inspection of the property. Copyright © SKMSTUDIO  
Plan produced using PlanUp.□