

**Harrier Close
Hemel Hempstead HP3 0FW
£3,000 PCM**

- Four Double Bedrooms
- Detached
- Downstairs Study
- Off road parking for 4/5 cars
- Electric car charging point
- Integrated white goods
- Available from 2nd October 2025
- EPC Rating B
- Council Tax Band G
- Holding Deposit £692



67 Marlowes
Hemel Hempstead
Hertfordshire
HP1 1LE

01442 233533

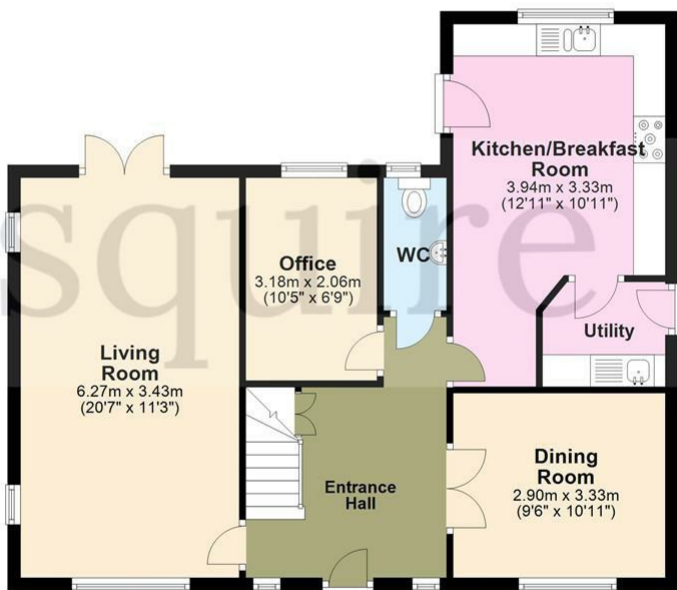
lettings@squireestates.co.uk

squireestates.co.uk

If you would like to apply for a property
please scan the QR code below...



Ground Floor
Approx. 71.4 sq. metres (768.5 sq. feet)



First Floor
Approx. 72.4 sq. metres (779.5 sq. feet)



Total area: approx. 143.8 sq. metres (1548.0 sq. feet)

The Floor Plan is not to Scale and measurements and areas shown are approximate and therefore should be used for illustrative purposes only. The plan has been prepared with due diligence and whilst we have confidence in the information produced it should not be relied upon. Maximum lengths and widths are represented on the plan. If there are any aspects of particular importance, you should carry out or commission your own inspection of the property. Copyright © SKMSTUDIO
Plan produced using PlanUp. □