

**Lawn Lane
Hemel Hempstead HP3 9JF
£1,150 PCM**

- 1 Bedroom Flat
- Parking Space Included
- Close to Transport Links
- Walking Distance from Town Centre
- Council Tax - B
- EPC - C
- Available now!
- Holding Deposit - £265



67 Marlowes
Hemel Hempstead
Hertfordshire
HP1 1LE

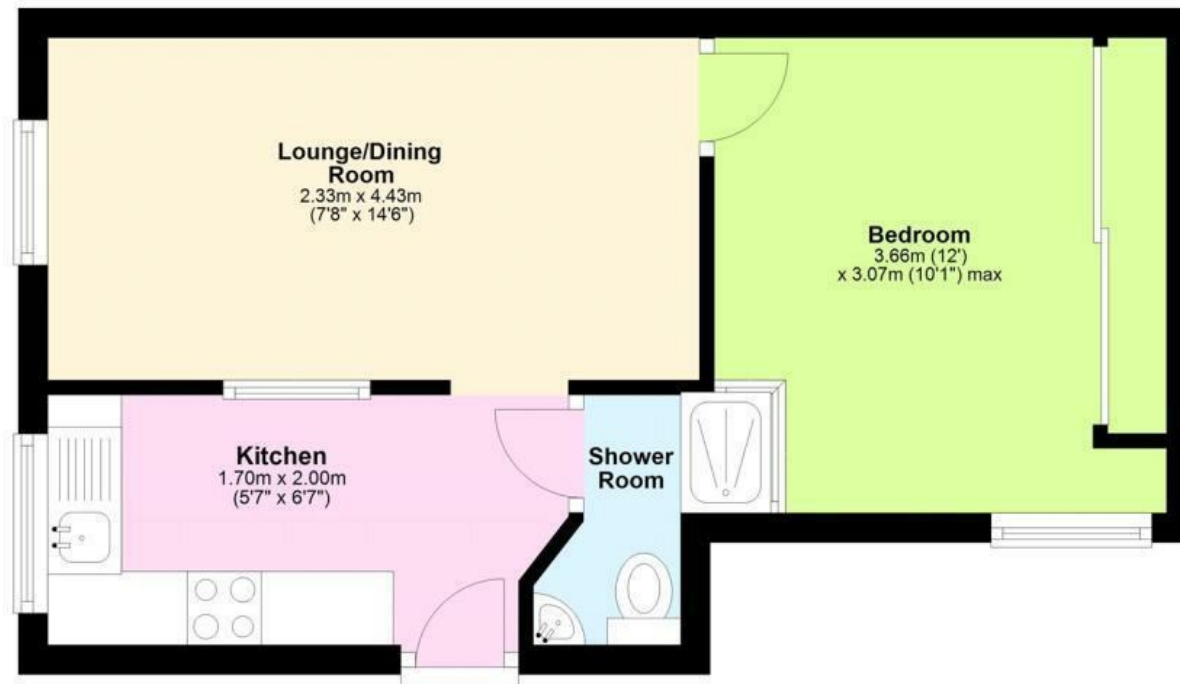
01442 233533

homes@squireestates.co.uk

squireestates.co.uk

Lower Ground Floor

Approx. 29.1 sq. metres (312.8 sq. feet)



Total area: approx. 29.1 sq. metres (312.8 sq. feet)

This floorplan is not to scale. It's for guidance only and accuracy is not guaranteed.

Plan produced using PlanUp.