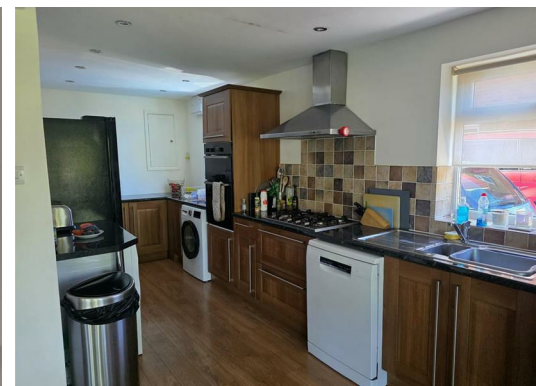


**Austins Mead  
Hemel Hempstead HP3 0JX  
£2,250 PCM**

- Four Bedrooms
- Two Bathrooms
- Large Garden
- Large Open Plan Kitchen/Dining Room
- Driveway Parking
- Village Location
- Pets Considered
- Gas Central Heating
- Double Glazing
- Available Mid October 2025



67 Marlowes  
Hemel Hempstead  
Hertfordshire  
HP1 1LE

01442 233533

[lettings@squireestates.co.uk](mailto:lettings@squireestates.co.uk)

[squireestates.co.uk](http://squireestates.co.uk)

If you would like to apply for a property  
please scan the QR code below...



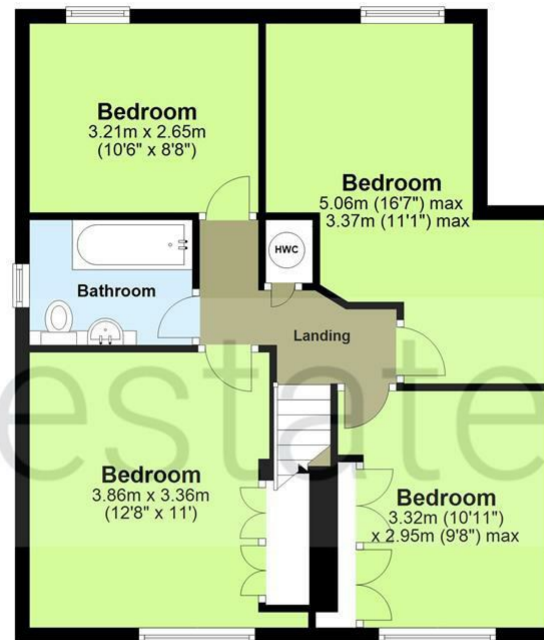
### Ground Floor

Approx. 75.6 sq. metres (814.1 sq. feet)



### First Floor

Approx. 58.6 sq. metres (630.5 sq. feet)



Total area: approx. 134.2 sq. metres (1444.7 sq. feet)

The Floor Plan is not to Scale and measurements and areas shown are approximate and therefore should be used for illustrative purposes only. The plan has been prepared with due diligence and whilst we have confidence in the information produced it should not be relied upon. Maximum lengths and widths are represented on the plan. If there are any aspects of particular importance, you should carry out or commission your own inspection of the property. Copyright © SKMSTUDIO

Plan produced using PlanUp.□