



St Marys Way
Hemel Hempstead, HP1 3AF

squire | estates

St Marys Way, Hemel Hempstead

One bedroom GROUND FLOOR apartment has been finished to a very high standard. Located in Hemel Hempstead Old Town, the property comprise of a large lounge/ kitchen breakfast room, double bedroom and a good size bathroom.

Must be viewed to be appreciated.
Available from 20th October 2025

Energy Efficiency Rating		
	Current	Potential
Very energy efficient - lower running costs		
(92 plus) A		
(81-91) B		
(69-80) C		
(55-68) D		
(39-54) E		
(21-38) F		
(1-20) G		
Not energy efficient - higher running costs		
England & Wales		EU Directive 2002/91/EC

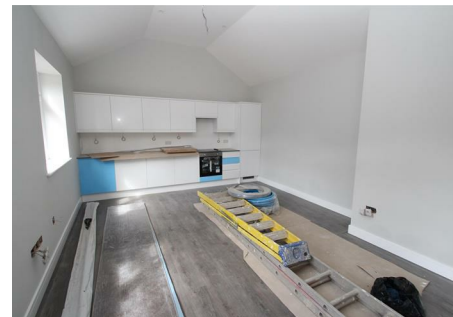
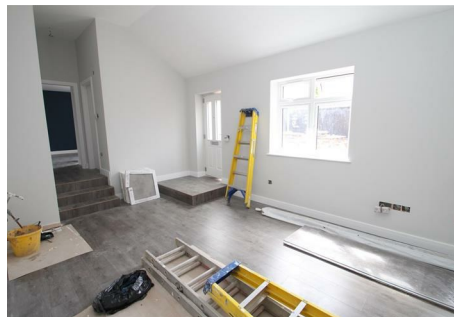
Features

- NEW BUILD
- One bedroom
- Walking distance to Old Town
- Must be seen
- High specification
- Integrated Kitchen
- Bright & Spacious
- Available from 20th October 2025
- Council tax band C
- EPC - A

Scan the QR Code to submit an offer



Please note we have not tested any apparatus, fixtures, fittings, or services. Interested parties must undertake their own investigation into the working order of these items. All measurements are approximate and photographs provided for guidance only.





67 Marlowes, Hemel Hempstead, Hertfordshire, HP1 1LE
01442 233533 | www.squirestates.co.uk