

**Downside  
Hemel Hempstead HP2 5PY  
£1,850 PCM**

- Three Bedrooms
- Fully Refurbished
- New Kitchen
- New Bathroom
- Private Garden
- Gas Central Heating
- Downstairs W/C
- Parking Available \*Unallocated
- Available Now
- Council Tax Band B





67 Marlowes  
Hemel Hempstead  
Hertfordshire  
HP1 1LE

01442 233533

lettings@squireestates.co.uk

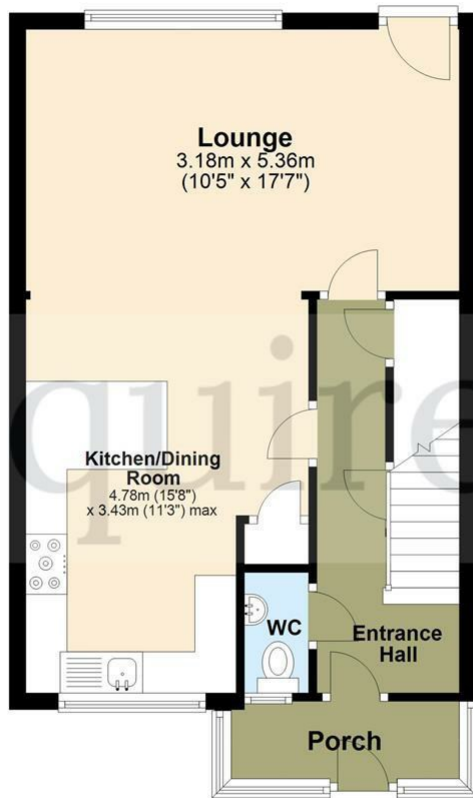
squireestates.co.uk

If you would like to apply for a property  
please scan the QR code below...



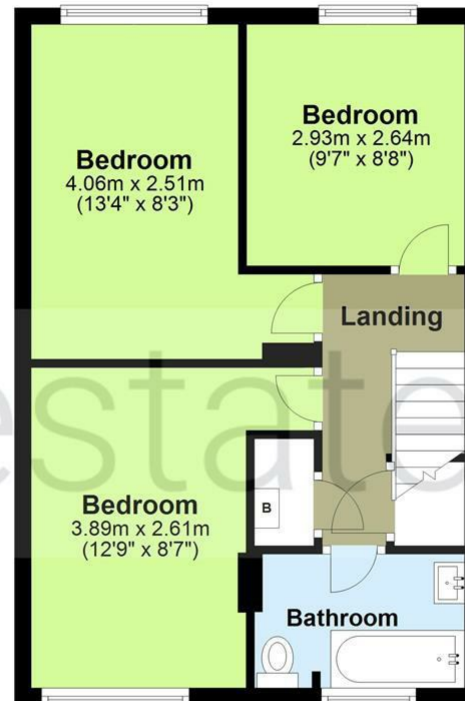
### Ground Floor

Approx. 45.5 sq. metres (489.9 sq. feet)



### First Floor

Approx. 42.4 sq. metres (456.1 sq. feet)



Total area: approx. 87.9 sq. metres (946.0 sq. feet)

The Floor Plan is not to Scale and measurements and areas shown are approximate and therefore should be used for illustrative purposes only. The plan has been prepared with due diligence and whilst we have confidence in the information produced it should not be relied upon. Maximum lengths and widths are represented on the plan. If there are any aspects of particular importance, you should carry out or commission your own inspection of the property. Copyright © SKMSTUDIO

Plan produced using PlanUp.□