



Austins Mead
Hemel Hempstead, HP3 0JX

squire | estates

Austins Mead, Hemel Hempstead

Nestled in the charming village of Bovingdon, Hemel Hempstead, this delightful four-bedroom house offers a perfect blend of comfort and modern living. The property boasts a spacious open-plan kitchen and dining room, ideal for family gatherings and entertaining guests. The large garden provides a wonderful outdoor space, perfect for children to play or for hosting summer barbecues.

Inside, the home features a well-appointed reception room that creates a warm and inviting atmosphere. The four generously sized bedrooms offer ample space for relaxation and personalisation, making it an excellent choice for families or those seeking extra room for guests or a home office. The bathroom is conveniently located to serve the needs of the household.

For those with vehicles, the property includes dedicated driving parking, ensuring convenience and ease of access. Living in Bovingdon means you can enjoy the tranquillity of village life while still being within easy reach of local amenities and transport links.

This house is a wonderful opportunity for anyone looking to settle in a friendly community with a lovely home and a large garden. Don't miss the chance to make this property your own.

Please note we have not tested any apparatus, fixtures, fittings, or services. Interested parties must undertake their own investigation into the working order of these items. All measurements are approximate and photographs provided for guidance only.

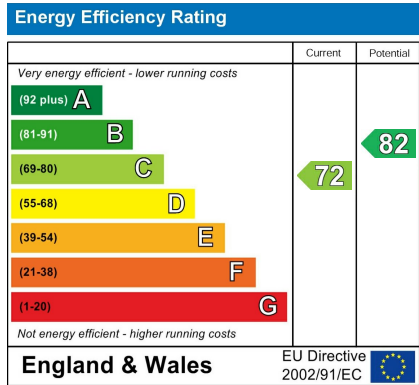


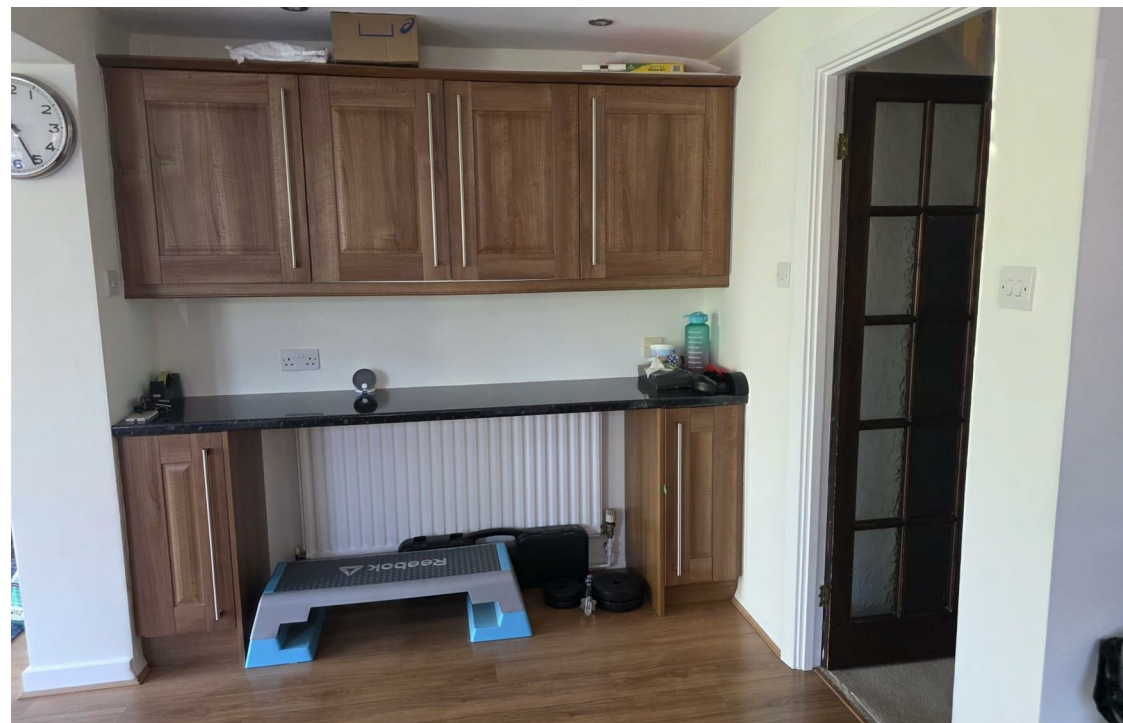
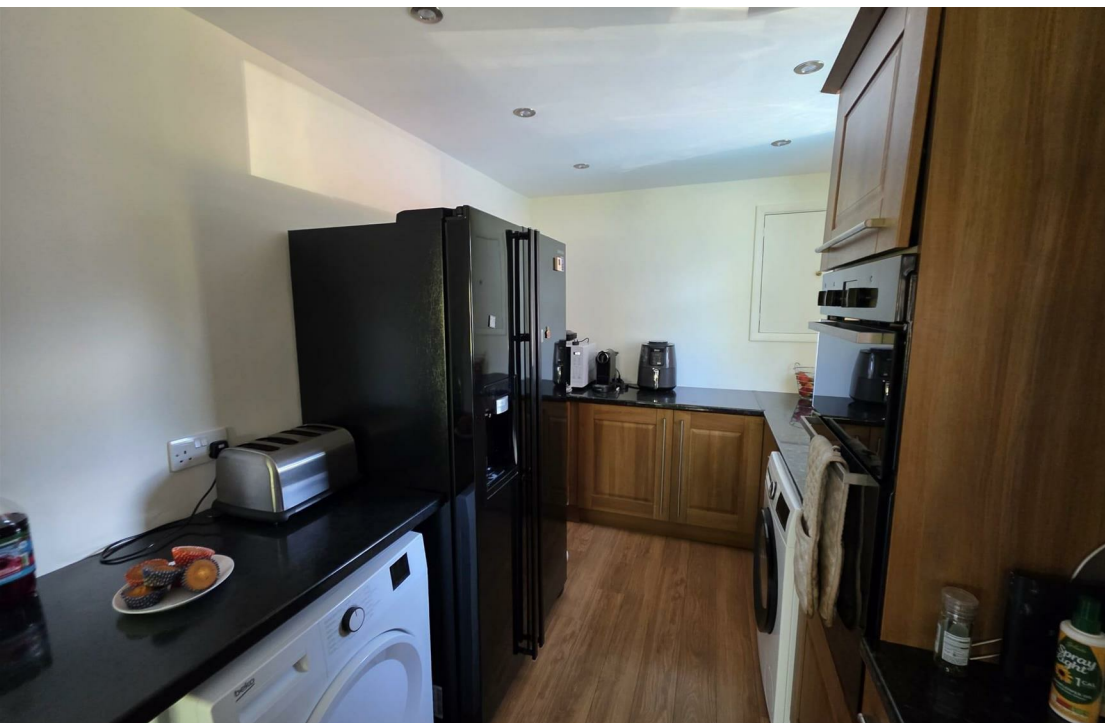
Features

- Four Bedrooms
- Two Bathrooms
- Large Garden
- Large Open Plan Kitchen/Dining Room
- Driveway Parking
- Village Location
- Pets Considered
- Gas Central Heating
- Double Glazing
- Available Mid October 2025

To Book a Viewing

Please contact Squire Estates on 01442 233533.





67 Marlowes, Hemel Hempstead, Hertfordshire, HP1 1LE
01442 233533 | www.squirestates.co.uk