



Marlowes
Hemel Hempstead, HP1 1ER

squire | estates

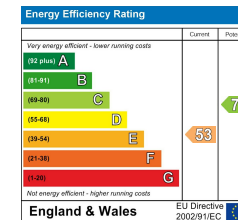
Marlowes, Hemel Hempstead

SQUIRE ESTATES are pleased to present a TWO DOUBLE bedroom flat situated in the town centre which has been recently decorated throughout.

The building is accessed via a security door with stairs leading to doors to all flats. The front door of the flat leads into a hall with doors to all rooms. The sitting room is a good size with laminate flooring and large windows overlooking the town centre. The kitchen has ample wall and base units and space for oven, washing machine and fridge freezer. The two bedrooms are both doubles and have laminate flooring, the modern bathroom is fitted with a white suite comprising of a bath with electric shower over, sink and WC.

The property benefits from all electric heating.

Available 19th November 2025



Please note we have not tested any apparatus, fixtures, fittings, or services. Interested parties must undertake their own investigation into the working order of these items. All measurements are approximate and photographs provided for guidance only.



Features

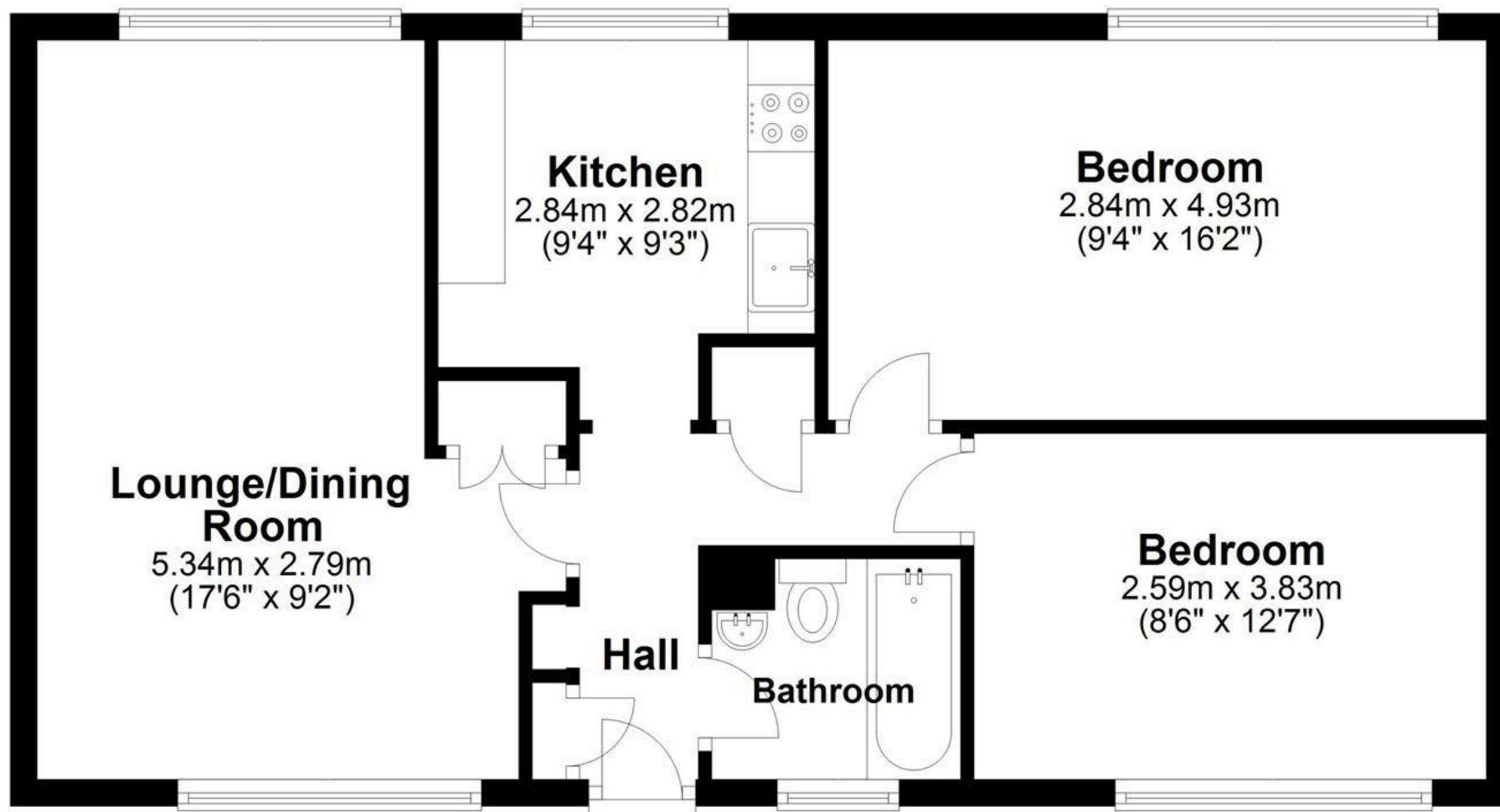
- TWO double bedrooms
- Recently decorated
- Town centre location
- Bright & spacious
- Available 19th November 2025
- Council tax band B
- EPC E

Scan the QR Code to submit an offer



Floor Plan

Approx. 59.0 sq. metres (635.1 sq. feet)



Total area: approx. 59.0 sq. metres (635.1 sq. feet)

Disclaimer - Floor plan is for marketing purposes only and is to be used as a guide - SKM Studio
Plan produced using PlanUp.

