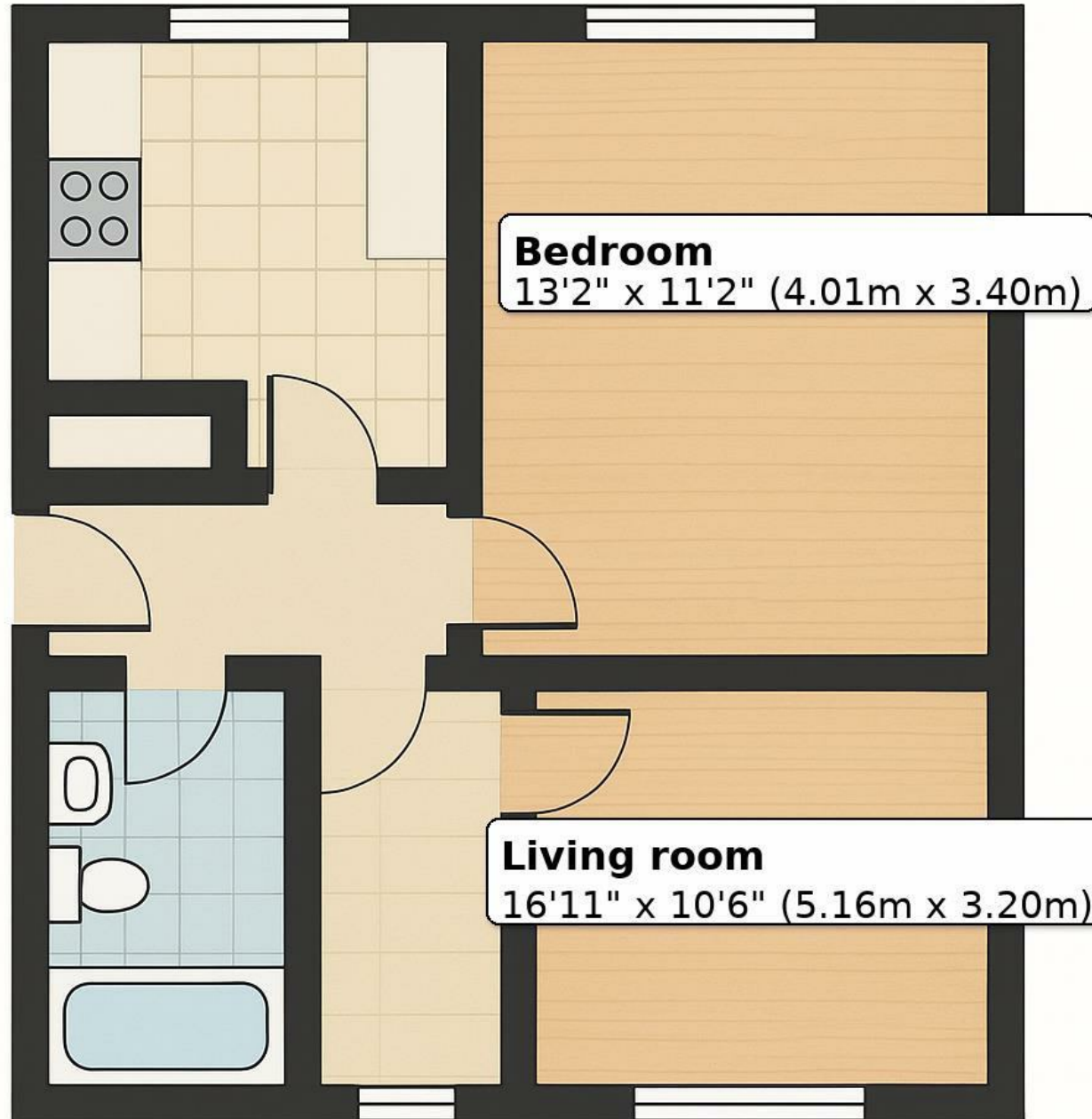


**Epping Green
Hemel Hempstead HP2 7JD
£1,150 PCM**

- Groundfloor One Bedroom Apartment
- Unfurnished
- Seperate Fitted Kitchen
- Spacious Living Room
- Bathroom with Power Shower
- Electric storage heating and double glazing; EPC C (69)
- Council Tax Band B (Dacorum)
- Communal grounds and unrestricted residents' car park (first-come-first-served)
- Handy for Henry Wells Square shops; buses from Aycliffe Drive/Henry Wells Sq to town centre
- Rail from Hemel Hempstead ? London Euston in ~27–34 mins (direct)





67 Marlowes
Hemel Hempstead
Hertfordshire
HP1 1LE

01442 233533

lettings@squireestates.co.uk

squireestates.co.uk

If you would like to apply for a property
please scan the QR code below...

