



Ritcroft Drive
Hemel Hempstead, HP3 8PD

squire | estates

Ritcroft Drive, Hemel Hempstead

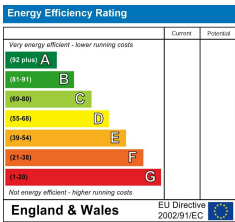
Offered to the market this Three Bedroom Mid-Terrace Home is located at the top of Hemel Hempstead, close to the popular area of Leverstock Green the property offers versatile living spaces, ideal for families or first-time buyers.

The ground floor features a generous dual-aspect lounge, providing plenty of natural light and space for family living. The kitchen is fitted with a range of wall and base units and opens directly onto the rear garden, while a useful utility room offers additional storage and convenient access to the front garden.

On the first floor, there are two comfortable double bedrooms and a further single bedroom, together with a family bathroom and a separate toilet. The loft is insulated, providing excellent additional storage options.

Outside, the property enjoys both front and rear gardens, with parking available in the road. Benefiting from gas central heating and a convenient location close to local shops, schools, and bus routes, this home presents a fantastic opportunity to make your own mark in a sought-after part of Hemel Hempstead.

No upper chain.



- ### Features
- Three bedroom mid terrace house
 - Kitchen and separate utility room
 - Good size rear garden
 - Two double and one single bedroom
 - Separate bathroom and toilet
 - Close to Leverstock Green
 - No upper chain

Scan the QR Code to submit an offer

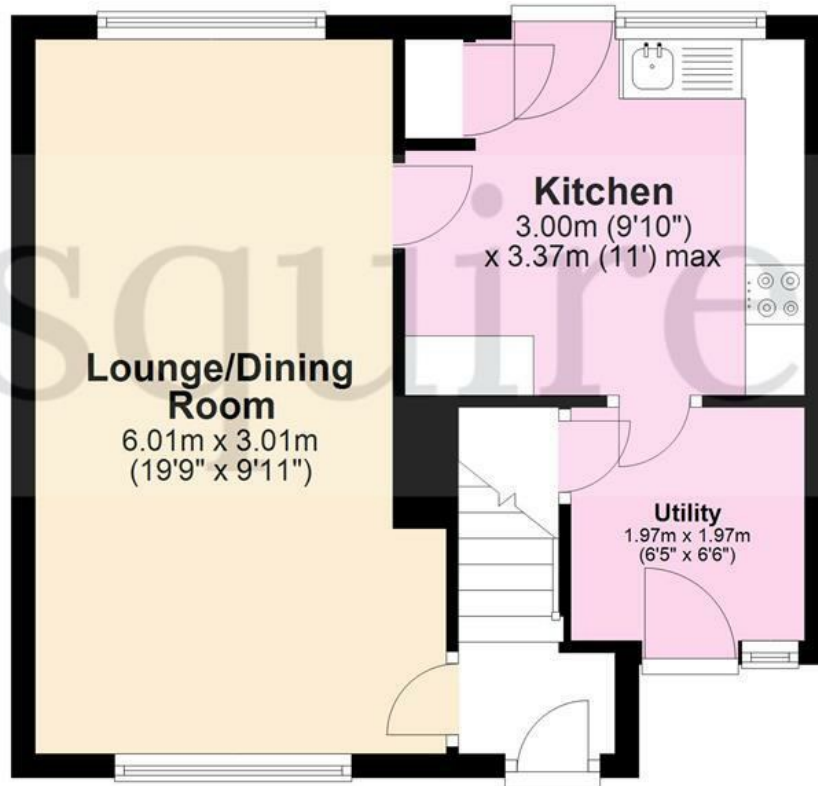


Please note we have not tested any apparatus, fixtures, fittings, or services. Interested parties must undertake their own investigation into the working order of these items. All measurements are approximate and photographs provided for guidance only.



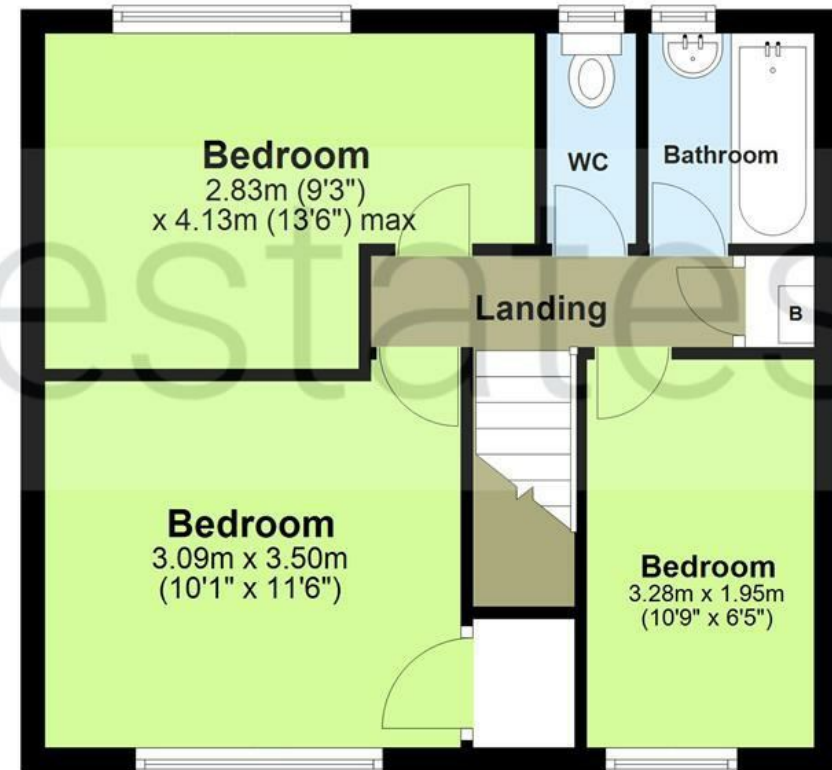
Ground Floor

Approx. 37.4 sq. metres (402.9 sq. feet)



First Floor

Approx. 39.0 sq. metres (420.2 sq. feet)



Total area: approx. 76.5 sq. metres (823.0 sq. feet)

The Floor Plan is not to Scale and measurements and areas shown are approximate and therefore should be used for illustrative purposes only. The plan has been prepared with due diligence and whilst we have confidence in the information produced it should not be relied upon. Maximum lengths and widths are represented on the plan. If there are any aspects of particular importance, you should carry out or commission your own inspection of the property. Copyright © SKMSTUDIO

Plan produced using PlanUp. □

