

**Great Elms Road  
Hemel Hempstead HP3 9TJ  
£950 PCM**

- Self Contained Studio
- Furnished as seen in photos
- Bills Package £200pcm covering gas, electricity, water, broadband & council tax
- Apsley Station - 540 Yards away
- Near Grand Union Canal
- EPC E (48)
- High Specification Bathroom Suite
- Available Now!
- Semi Furnished
- Double Glazing / Gas Central Heating



67 Marlowes  
Hemel Hempstead  
Hertfordshire  
HP1 1LE

01442 233533

lettings@squireestates.co.uk

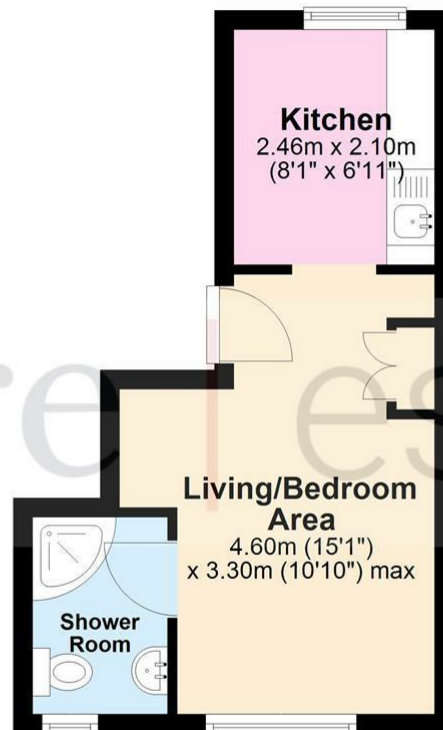
squireestates.co.uk

If you would like to apply for a property  
please scan the QR code below...



## Floor Plan

Approx. 21.0 sq. metres (225.7 sq. feet)



Total area: approx. 21.0 sq. metres (225.7 sq. feet)

The Floor Plan is not to Scale and measurements and areas shown are approximate and therefore should be used for illustrative purposes only. The plan has been prepared with due diligence and whilst we have confidence in the information produced it should not be relied upon. Maximum lengths and widths are represented on the plan. If there are any aspects of particular importance, you should carry out or commission your own inspection of the property.

Copyright © SKMSTUDIO  
Plan produced using PlanUp.□