



**FOR
SALE**

Stornoway, Hemel Hempstead

squire | estates

Spacious Two-Bedroom First Floor Flat in a Sought-After Location. This spacious and modern flat offers comfortable contemporary living. The property comprises a generous double bedroom and a well-proportioned single bedroom.

The flat features a large and bright living/dining area, perfect for both relaxing and entertaining. The contemporary kitchen is fitted with stylish white gloss units, contrasting black worktops, and includes a built-in oven and hob.

The modern bathroom is finished to a high standard, boasting a white suite, walk-in shower, and sleek contemporary tiling.

Additional benefits include access to a well-maintained communal garden area. The property is conveniently located close to local shops and schools, with excellent transport links providing easy access to St Albans and the M1/M25 motorways.

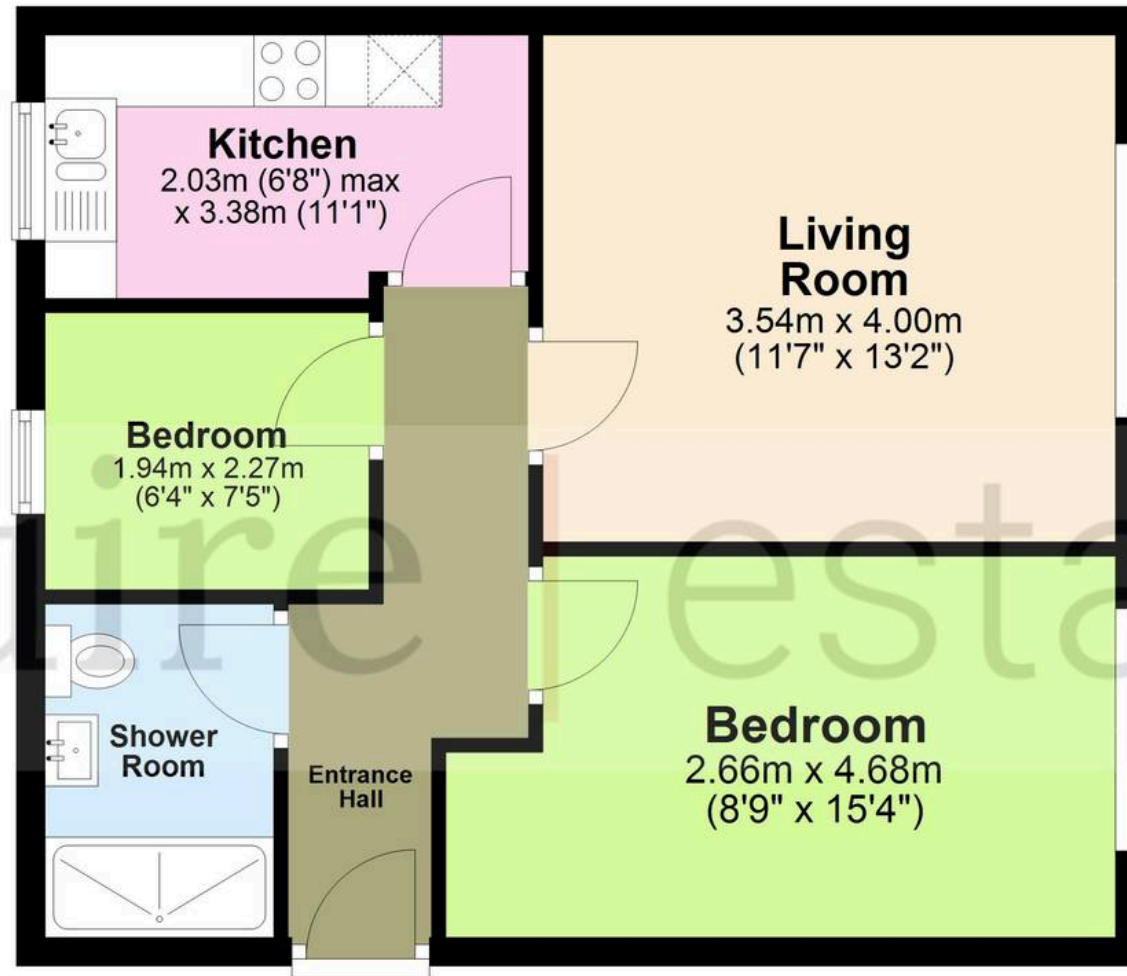
An ideal home for professionals, couples, or small families seeking modern living in a prime location.

- Two Bedroom (One Double & One Single)
- Modern Kitchen Suite Incl. Appliances
- Contemporary Shower Room
- Gas Central Heating & Double Glazing
- Close to local shops
- First Floor Apartment
- No upper chain



Floor Plan

Approx. 47.3 sq. metres (509.0 sq. feet)



Total area: approx. 47.3 sq. metres (509.0 sq. feet)

The Floor Plan is not to Scale and measurements and areas shown are approximate and therefore should be used for illustrative purposes only. The plan has been prepared with due diligence and whilst we have confidence in the information produced it should not be relied upon. Maximum lengths and widths are represented on the plan. If there are any aspects of particular importance, you should carry out or commission your own inspection of the property. Copyright © SKMSTUDIO

Plan produced using PlanUp.□



squire | estates

67 Marlowes, Hemel Hempstead
Hertfordshire HP1 1LE
t. 01442 233533

www.squireestates.co.uk