

TO
LET



squire | estates

Flat 26, Gadebury Heights, Bury Road
£268,500 | £1,500 PCM

squire | estates

Flat 26

Gadebury Heights, Hemel Hempstead

Welcome to this spacious and inviting two-bedroom apartment ideally situated close to the bustling town center of Hemel Hempstead. Located on the s...

Council Tax band: TBD

EPC Energy Efficiency Rating: B

EPC Environmental Impact Rating: B

- Allocated underground parking space
- Close to Hemel town Centre
- Two Bedroom Apartment
- Second floor
- Newly decorated
- New carpet throughout
- Two double bedrooms master with en suite
- Balcony off lounge



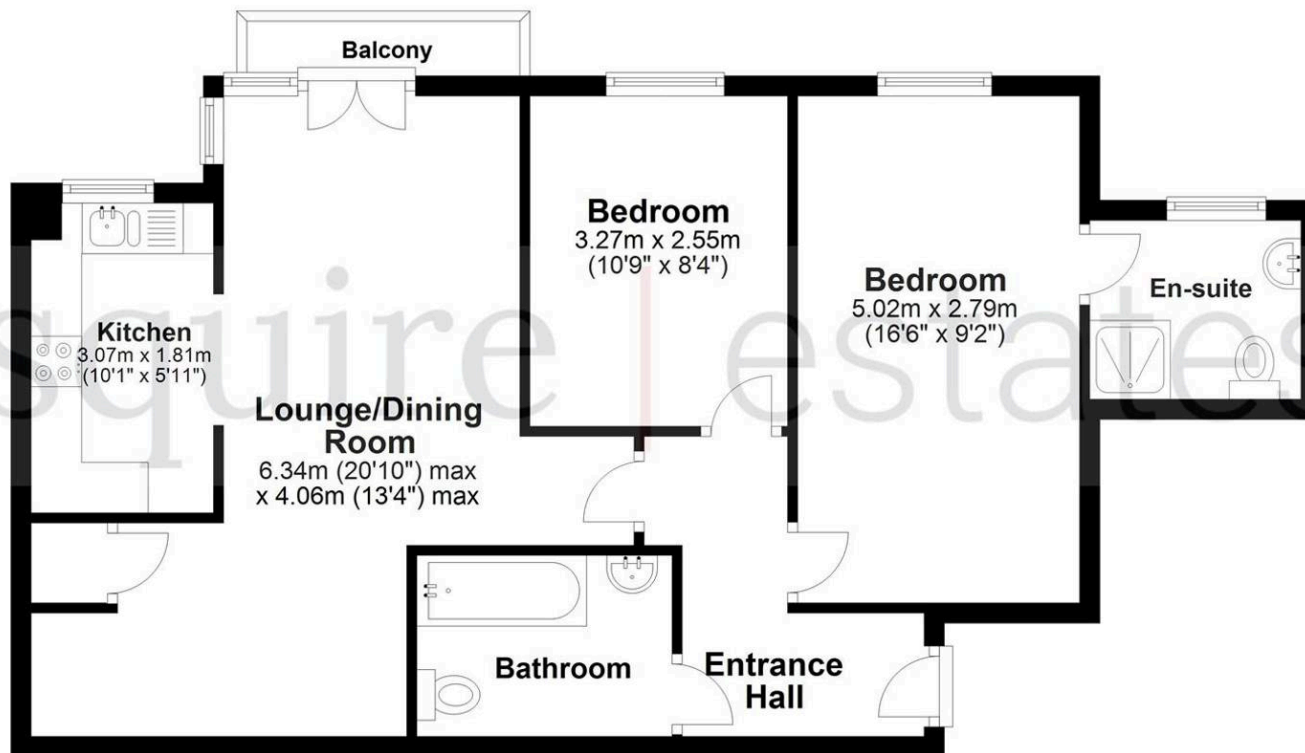
squire | estates

67 Marlowes, Hemel Hempstead
Hertfordshire HP1 1LE
t. 01442 233533

www.squireestates.co.uk

Floor Plan

Approx. 65.6 sq. metres (706.4 sq. feet)



Total area: approx. 65.6 sq. metres (706.4 sq. feet)

Disclaimer - Floor plan is for marketing purposes only and is to be used as a guide - SKM Studio
Plan produced using PlanUp.