

**FOR  
SALE**



Beehive House Allandale, Hemel Hempstead

squire | estates



This well-presented one-bedroom apartment offers comfortable and modern living throughout. The property features a generously sized double bedroom with built-in wardrobes and direct access to a private balcony, providing an ideal space for relaxation. The bathroom is finished to a good standard and comprises a pedestal wash hand basin, WC, and a bath with shower over, complemented by a heated towel rail.

The apartment benefits from an open-plan lounge and kitchen, creating a bright and sociable living area. The contemporary kitchen is fully fitted with a range of integrated appliances, offering both practicality and a sleek finish.

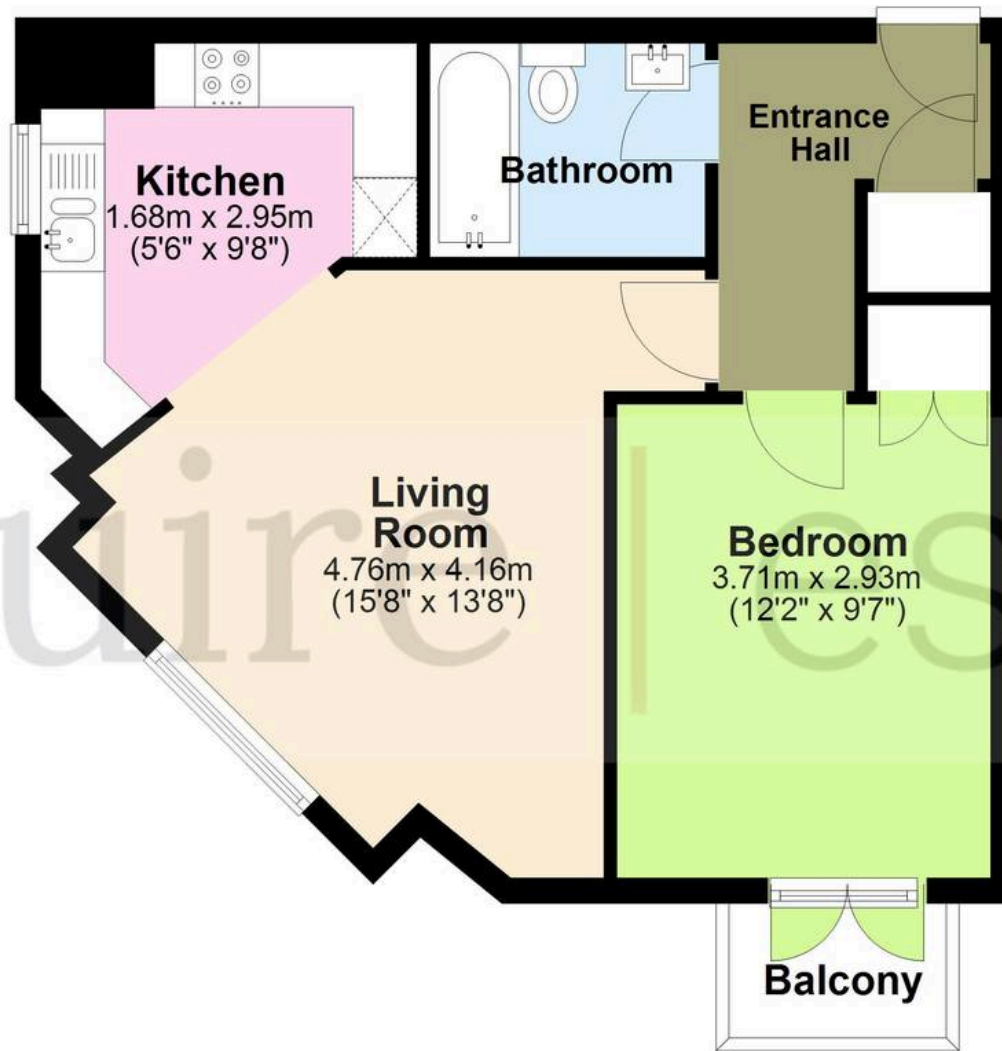
An ideal home for professionals or couples, this apartment combines thoughtful design with comfortable living space.

- One bedroom apartment
- Modern Apartment
- Gas central heating
- CHAIN FREE
- Walking distance to the Town Centre
- EPC - B



## Floor Plan

Approx. 43.9 sq. metres (472.7 sq. feet)



Total area: approx. 43.9 sq. metres (472.7 sq. feet)

The Floor Plan is not to Scale and measurements and areas shown are approximate and therefore should be used for illustrative purposes only. The plan has been prepared with due diligence and whilst we have confidence in the information produced it should not be relied upon. Maximum lengths and widths are represented on the plan. If there are any aspects of particular importance, you should carry out or commission your own inspection of the property. Copyright ©

SKMSTUDIO

Plan produced using PlanUp. □





squire | estates

67 Marlowes, Hemel Hempstead  
Hertfordshire HP1 1LE  
t. 01442 233533

[www.squireestates.co.uk](http://www.squireestates.co.uk)