

**FOR  
SALE**



Dunstable Road, Totternhoe

squire | estates

Situated in the lovely village of Tottenhoe, this characterful three-bedroom semi-detached property enjoys stunning views, including outlooks towards the Whipsnade White Lion, and offers spacious, well-balanced accommodation in a great location close to Dunstable Downs and Whipsnade Zoo.

On entering the property off of the hallway there are two reception rooms, comprising a welcoming living room with a cosy log burner and a separate dining room, ideal for both everyday living and entertaining.

The bright kitchen provides ample workspace and overlooks the attractive south-facing garden, allowing plenty of natural light to fill the space. The kitchen comprises of wall and base units with co-ordinated work surfaces and space for oven and free standing fridge freezer and washing machine.

The home features three good-sized bedrooms and a family bathroom comprising of a lovely white suite with the shower over the bath.

Further benefits include a garage and driveway parking for up to three cars, adding excellent convenience. Combining character features, generous room sizes, and beautiful views, this delightful home is ideally positioned in a sought-after village setting.

Outside, the property continues to impress with a good-sized garden, perfect for relaxing or hosting, along with a charming summerhouse offering additional versatility.

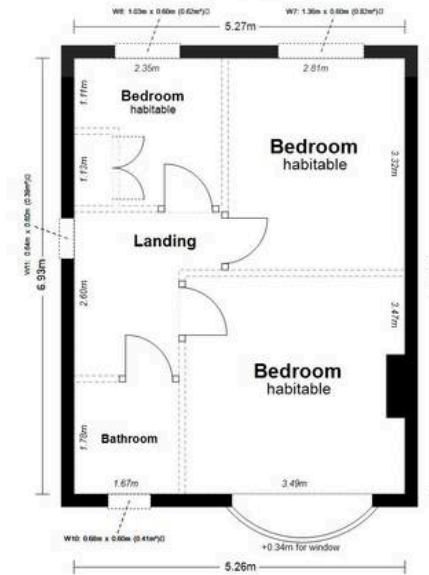
- Three Bedrooms
- Family Bathroom
- Two Reception Rooms
- Kitchen
- Stunning Views
- South Facing Garden
- Driveway
- Ample Parking
- Summer House



## GROUND FLOOR



## FIRST FLOOR





t. 01442 233533 | e. [homes@squirestates.co.uk](mailto:homes@squirestates.co.uk)