

**FOR
SALE**



Tattershall Drive, Hemel Hempstead

squire | estates

Located within the ever popular Woodhall Farm area, this well maintained one bedroom first floor flat presents an ideal purchase for first time buyers, downsizers or buy to let investors.

The accommodation is in good decorative order throughout and offers comfortable, well proportioned living space. The lounge is a particularly bright room, benefiting from attractive views across open fields which provide a pleasant outlook and plenty of natural light.

The kitchen is fitted with a range of wall and base mounted units and offers space for an under counter fridge/freezer together with a washing machine, making it both practical and functional.

The property further benefits from a spacious double bedroom complete with fitted wardrobes, providing excellent built in storage.

The bathroom is fitted with a suite comprising a bath with shower attachment over, wash hand basin and WC.

A notable advantage of this home is the inclusion of a garage, offering valuable additional storage or secure parking.

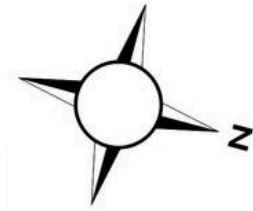
Leasehold with approximately 50 years remaining on the lease, this property is conveniently situated close to local shops, amenities, schooling and transport connections.

- One bedroom flat
- Top floor
- Garage in block
- CHAIN FREE
- 50 Year lease



Floor Plan

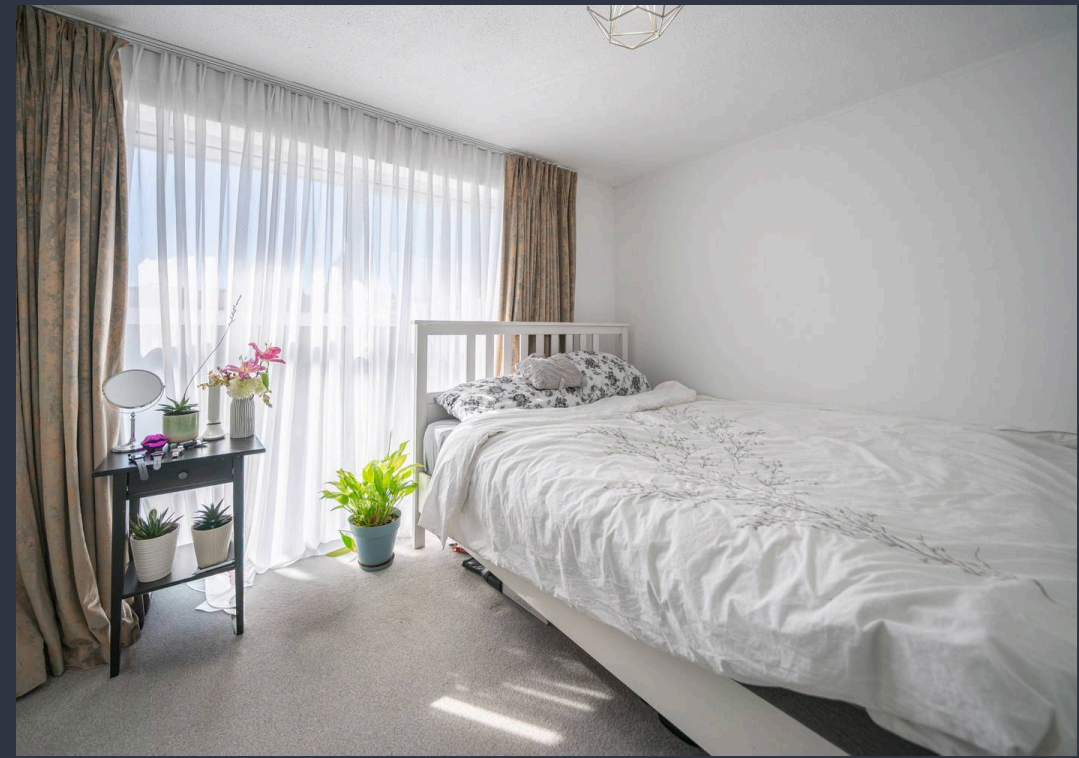
Approx. 39.7 sq. metres (426.8 sq. feet)



Total area: approx. 39.7 sq. metres (426.8 sq. feet)

The Floor Plan is not to Scale and measurements and areas shown are approximate and therefore should be used for illustrative purposes only. The plan has been prepared with due diligence and whilst we have confidence in the information produced it should not be relied upon. Maximum lengths and widths are represented on the plan. If there are any aspects of particular importance, you should carry out or commission your own inspection of the property. Copyright © SKMSTUDIO

Plan produced using PlanUp. □



squire | estates

67 Marlowes, Hemel Hempstead

Hertfordshire HP1 1LE

t. 01442 233533

www.squireestates.co.uk