



**7 Becketts Yard Selden Hill, Hemel Hempstead, Hertfordshire HP2
4TQ**

squire | estates

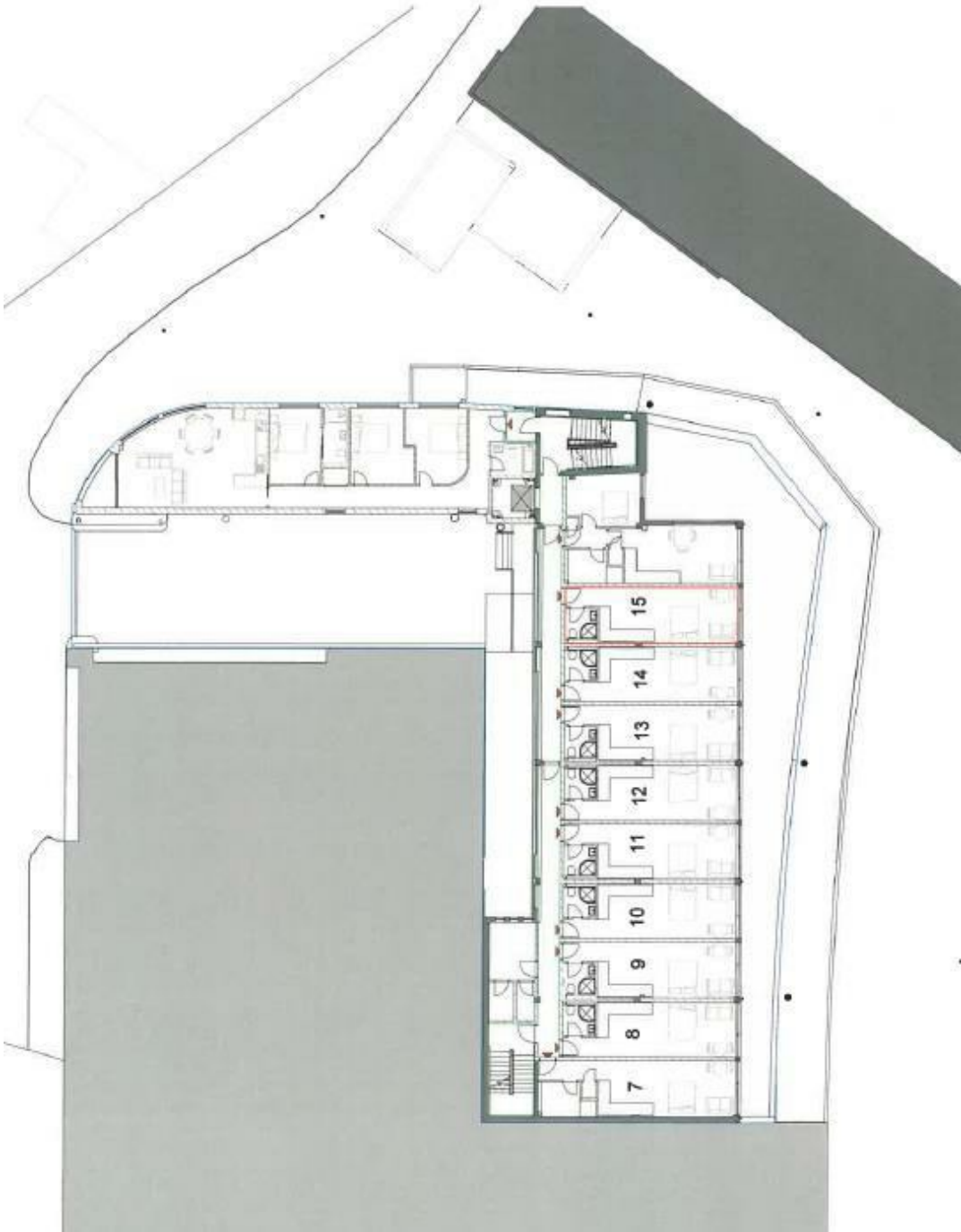
Squire Estates are pleased to market this GROUND floor studio apartment in Becket's Yard, Selden Hill. The apartments are set in the heart of the town centre and designed with modern lifestyles in mind. The properties comprise of a white ' High Gloss ' kitchen with intergrated appliances, Amica oven and ceramic hob and SMEG washer dryer. There is a separate and contemporary shower room. These stylish apartments are offered to a high specification throughout. Available from 12/10/22

Please note there is no parking with the apartments.









Energy Efficiency Rating		
	Current	Potential
Very energy efficient - lower running costs		
(92 plus) A		
(81-91) B		
(69-80) C	70	70
(55-68) D		
(39-54) E		
(21-38) F		
(1-20) G		
Not energy efficient - higher running costs		
England & Wales		EU Directive 2002/91/EC
Environmental Impact (CO ₂) Rating		
	Current	Potential
Very environmentally friendly - lower CO ₂ emissions		
(92 plus) A		
(81-91) B		
(69-80) C		
(55-68) D		
(39-54) E		
(21-38) F		
(1-20) G		
Not environmentally friendly - higher CO ₂ emissions		
England & Wales		EU Directive 2002/91/EC