



**29 The Spires, Hemel Hempstead, Herts HP2 4FS**  
**£1,100 PCM**

squire | estates

---

This two bedroom apartment is within walking distance to the Town Centre. Comprises of spacious lounge with balcony, fully fitted and appliances kitchen, EN SUITE TO MASTER BEDROOM and family bathroom. ALLOCATED PARKING, Available from 25/06/22

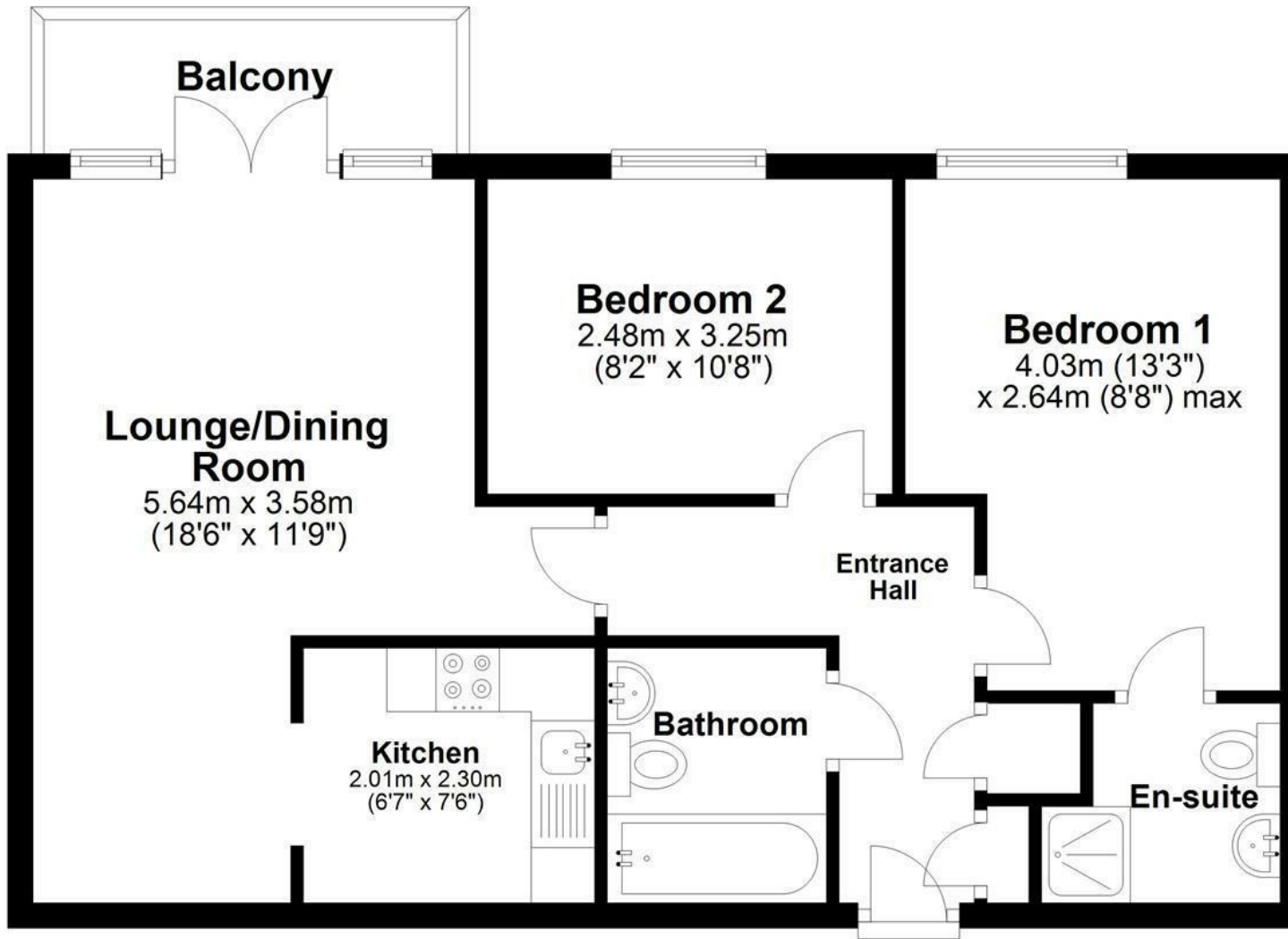
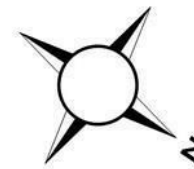






# Floor Plan

Approx. 55.3 sq. metres (594.9 sq. feet)



Total area: approx. 55.3 sq. metres (594.9 sq. feet)

Disclaimer - Floor plan is for marketing purposes only and is to be used as a guide.  
Plan produced using PlanUp.

Energy Efficiency Rating		
	Current	Potential
Very energy efficient - lower running costs		
(92 plus) A		85
(81-91) B		
(69-80) C	72	
(55-68) D		
(39-54) E		
(21-38) F		
(1-20) G		
Not energy efficient - higher running costs		
England & Wales		
		EU Directive 2002/91/EC
Environmental Impact (CO <sub>2</sub> ) Rating		
	Current	Potential
Very environmentally friendly - lower CO <sub>2</sub> emissions		
(92 plus) A		79
(81-91) B		
(69-80) C	80	
(55-68) D		
(39-54) E		
(21-38) F		
(1-20) G		
Not environmentally friendly - higher CO <sub>2</sub> emissions		
		EU Directive 2002/91/EC
England & Wales		